
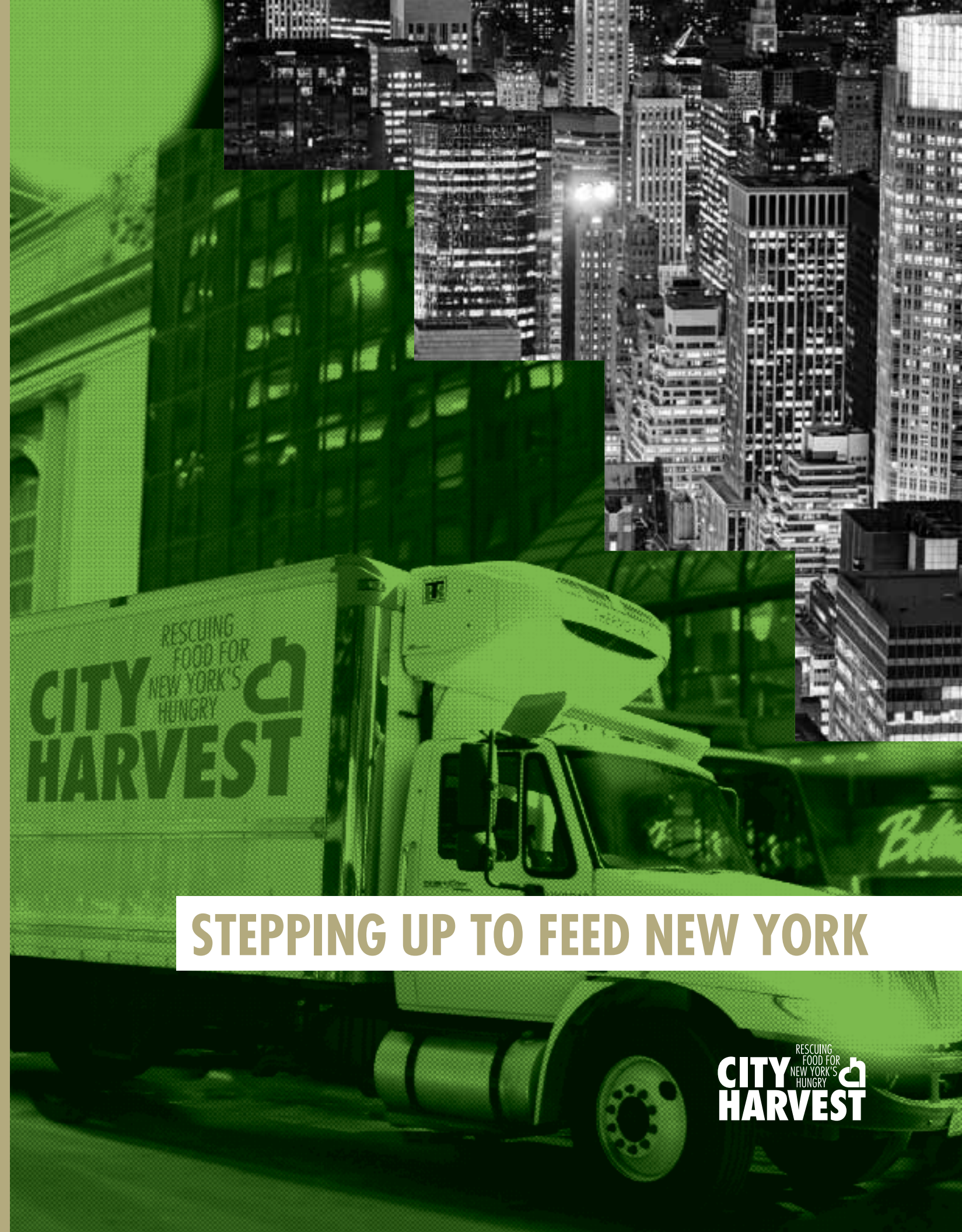




Now serving New York City for nearly 30 years, City Harvest is the world's first food rescue organization, dedicated to feeding the city's hungry men, women, and children. This year, City Harvest will collect more than 30 million pounds of excess food from all segments of the food industry, including restaurants, grocers, corporate cafeterias, manufacturers, and farms. This food is then delivered free of charge to nearly 600 community food programs throughout New York City using a fleet of trucks and bikes as well as volunteers on foot. Each week, City Harvest helps over 300,000 hungry New Yorkers find their next meal.

575 Eighth Avenue  
Fourth Floor  
New York, NY 10018  
t. 917.351.8700  
f. 917.351.8720  
[www.cityharvest.org](http://www.cityharvest.org)

 This booklet is printed on paper made from 10% post-consumer fibers



# STEPPING UP TO FEED NEW YORK





**2011 ANNUAL REPORT**

## DEAR SUPPORTERS

The persistent recession has brought us into a new economic reality. New Yorkers that in many cases have worked hard for most of their lives now need emergency food for themselves and their families. Our agencies have reported that demand for food has risen 25% on average over the past four years.

Our neighbors who relied on food pantries or soup kitchens in the past have turned to them again to meet their most basic dietary needs and will need to look to them for the foreseeable future. Others who never thought they would need emergency food now find themselves turning to programs served by City Harvest.

Against this backdrop, City Harvest has done even more of what we do best. City Harvest gets healthy food into the hands of people in need. Over the past year, City Harvest rescued and delivered close to 29 million pounds of food, with an emphasis on nutritious fresh produce. We looked to a generous network of thousands of food donors and 39,000 financial donors to help fill our trucks and work towards building strong, food-secure communities in high-need areas of the city. More than 2,200 volunteers contributed their muscle to City Harvest, led by corporate partners that have made fighting hunger a priority for themselves and their employees.

The partners you'll read about in this report stepped up in response to the greater need. With this support, City Harvest has been able to increase the amount of food we rescue, deliver the experience of healthy eating to thousands of our neighbors, and make strides to transform the food landscape in places where significant nutritional barriers exist.

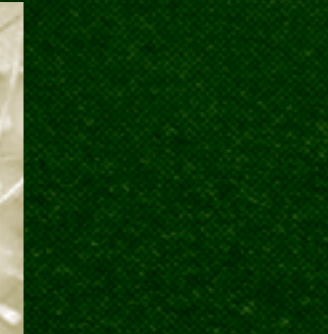
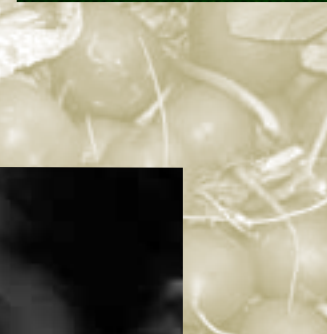
This year, City Harvest also embarked on a strategic planning process to tell us where to go from here. Linking those in need with those who can help is the basis of what makes City Harvest work. Today, however, we face a hunger emergency that has become chronic. In coming years, it will become necessary to build on our strong base of support to go even further for New York's hungry. We are happy to report that City Harvest has already taken an important step by opening a food rescue facility with the support of our committed donors and friends.

By mapping the road ahead, City Harvest can meet the hunger crisis head on. Let's continue to work together to take on this challenge.

Jilly Stephens  
*Executive Director*

James D. Kallman  
*Chairman,  
Board of Directors*

**"OVER THE PAST YEAR, WE RESCUED AND DELIVERED CLOSE TO 29 MILLION POUNDS OF FOOD, WITH AN EMPHASIS ON NUTRITIOUS FRESH PRODUCE."**





## STEP 1

### RESCUING EVERY AVAILABLE POUND

At a time of greater need, it is even more important to put every available pound of excess food to good use. For close to 30 years, City Harvest has made that connection. Our trucks and bikes crisscross city streets between thousands of generous food donors and close to 600 community programs, feeding hungry New Yorkers with some 29 million pounds of food that otherwise would have gone to waste—over 85% of it nutrient-dense produce, dairy, meat, and more.

City Harvest delivers a great variety of food, thanks to a diversity of donors contributing food consistently and in volume. We have been able to source more food and keep our trucks moving to make those important food pick-ups thanks to funders like Robin Hood and The New York Times Neediest Cases Fund, who each came forward in 2011 with significant contributions.

Vendors at Hunts Point Terminal Produce Cooperative Association led donations with 2.5 million pounds of fresh produce, while City Harvest trucks stopped at every Pret a Manger location nearly every day. We have the unique ability to take last-minute or difficult donations. In November, Food Council chefs donated dishes they prepared from a giant, 1,400-pound pumpkin donated after the Pumpkin Festival in Central Park. When FreshDirect called with 70,000 pounds of food for pick-up following a January snowstorm, City Harvest made sure this high-quality donation reached food programs throughout the city.

The city's largest annual food drive, Daily News Readers Care to Feed the Hungry of New York, broke records at over 1 million pounds of food collected at firehouses, police stations, schools, and through private food drives, with more than 420 schools raising over 283,000 pounds. The Feed the Kids food drive, which raises food especially for children, and two annual kosher drives rounded out our annual efforts to bring in shelf-stable food.

We continued to seek out kosher food, directing over 2 million pounds to agencies serving observant families, and raised the bar on services provided to all New Yorkers by building the capacity of agency partners.

City Harvest provided support to member agencies to enhance their ability to feed our hungry neighbors, including: technical assistance to agencies transitioning to “client choice” distributions that allow hungry New Yorkers to select what they most need to feed their families; organizational management workshops for 200 agency staff; and \$150,000 in mini-grants to agencies with projects to improve their services.

**“WHEN FRESHDIRECT CALLED WITH 70,000 POUNDS OF FOOD FOR PICK-UP FOLLOWING A JANUARY SNOWSTORM, CITY HARVEST MADE SURE THIS HIGH-QUALITY DONATION REACHED FOOD PROGRAMS THROUGHOUT THE CITY.”**



## STEP 2

# DELIVERING THE EXPERIENCE OF HEALTHY EATING

For over a decade, City Harvest has conducted nutrition education programs in low-income communities. We have seen that the experience of nutritious food—shopping for it, preparing it, and most of all, eating it—leads to incorporating good food into the daily diet.

In addition to traditional hands-on nutrition education courses, City Harvest runs cooking demos for those who regularly attend our Mobile Markets, farmer's market-style distributions of fresh produce held in high-need neighborhoods. This year, educators provided 9,300 samples of healthy dishes along with recipes for preparing them at Mobile Markets and other events.

Nutritious food samples were also distributed at Healthy Corner Stores, a program that City Harvest began in Staten Island based on our experience partnering with the Department of Health on its Healthy Bodegas initiative in other boroughs. Through a partnership with the Department of Health, City Harvest offered similar demos at Green Carts in the South Bronx and Bed-Stuy, Brooklyn, with vendors reporting increased sales and community interest in fresh produce.

Learning that is convenient and hands-on is more likely to stick. Using Share Our Strength's Shopping Matters® curriculum, City Harvest offered tours of local supermarkets to help those with limited income shop for healthy options. We also trained educators

to deliver our own Smart Bites—15-minute nutrition education lessons like “Sugar Overload,” which involves measuring out the amount of sugar found in common sweetened beverages. Participants enjoy and easily absorb these short activities while waiting for a Mobile Market or other program.

City Harvest's curricula reach New Yorkers of all ages at risk of hunger and diet-related diseases with lessons on healthy eating. City Harvest's Fruit Bowl, which combines regular deliveries of fresh fruit and low-fat dairy to pre-school and after-school programs with a unique nutrition education program, now reaches 3,700 children. This year, City Harvest completed our final year of the pilot phase of Well Seasoned, producing a curriculum focused on older New Yorkers' unique dietary needs for use at senior centers.



**“CITY HARVEST’S CURRICULA REACH NEW YORKERS OF ALL AGES AT RISK OF HUNGER AND DIET-RELATED DISEASES WITH LESSONS ON HEALTHY EATING.”**



## TRANSFORMING THE FOOD LANDSCAPE

City Harvest's community-based approach to fighting hunger, *Healthy Neighborhoods*, is designed to transform the food landscape in areas with high rates of hunger and diet-related diseases—high-need areas like the South Bronx, the North Shore of Staten Island, and Bed-Stuy in Brooklyn. City Harvest's vision is of communities where healthy food is available, affordable, and in high demand.

The first and most immediate step is to deliver more nutritious food to these communities. Last year, City Harvest channeled 8.3 million pounds of food to programs within the geographic boundaries of our *Healthy Neighborhoods*, ensuring that residents in the greatest need were able to access fresh produce and other healthy foods. On top of those deliveries, we provided nearly 650,000 pounds of fresh fruits and vegetables through our Mobile Markets. This year City Harvest expanded *Healthy Neighborhoods* to Bed-Stuy, including a new Mobile Market with about 500 households registered by the end of the year.

Along with nutrition education, supporting healthy food retail is part of City Harvest's long-term strategy in these communities. We partner with others to bring new outlets for healthy food to places where it often isn't accessible or affordable. In partnership with GrowNYC, in July City Harvest

began a new farmer's market run by local youth in Tappen Park in the North Shore. Stapleton Youthmarket served as a reliable source of farm-fresh food, with sales of 10,000 pounds of produce in its first summer season.

Several foundations appreciate our strategy to make healthy choices easier such as the Stavros Niarchos Foundation. With their support, and with the commitment of community members and partners, we are already seeing results. An external survey found that more than 80% of respondents at our Mobile Markets in the South Bronx and in Staten Island eat more fruits and vegetables as a result of attending. Nearly 70% are reporting positive changes in their shopping habits, making the best possible use of limited incomes.

**"THIS YEAR CITY HARVEST EXPANDED HEALTHY NEIGHBORHOODS TO BED-STUY, INCLUDING A NEW MOBILE MARKET WITH ABOUT 500 HOUSEHOLDS REGISTERED BY THE END OF THE YEAR. "**

## LINKING THOSE IN NEED AND THOSE WHO CAN HELP

City Harvest was founded to link the generosity and abundance of our city and those in need. Engaging individuals and companies to make a difference at the local level remains the bedrock of our strategy. For New York's corporate community, this effort was year-round.

A beneficiary of Credit Suisse's Holiday Charity Initiative, City Harvest received gifts from more than 685 employees, plus a match and added award from the Foundation. Support from Barclays Capital helped raise \$1.5 million for City Harvest at An Evening of Practical Magic, our annual gala event held in April. Citibank sponsored City Harvest's Skip Lunch Fight Hunger campaign, which asked individuals to contribute what they would normally spend on lunch. This year's campaign raised nearly \$500,000 to help feed hungry children and families.

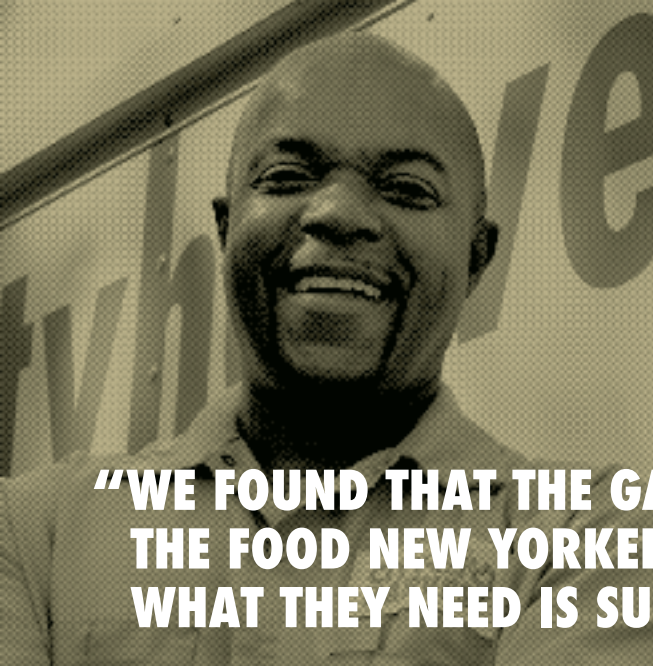
Understanding that children make up a significant portion of the people we feed through soup kitchens and food pantries, City Harvest was able to bring together a range of organizations to help improve school meals. The Alliance for Child Nutrition Reauthorization involved more than 85 partner organizations pushing for better school food. In December, Congress passed the "Healthy, Hunger-Free Kids Act" that will govern the School Lunch and Breakfast Programs and other child nutrition programs for the next five years.

Based on our experience partnering with schools, City Harvest assigned a nutrition education intern to three schools participating in our pilot Healthy Schools program, designed to assist parents, students, teachers, and administrators in getting the most benefit from food

at school. Interns also run educational programs on healthy eating. Healthy Schools serves a student body of nearly 2,000 students among the three schools, one in each *Healthy Neighborhoods* community.

City Harvest can serve as a catalyst for change by connecting the community with resources at the individual and family level. Last year, we began a 12-week pilot program in partnership with Weight Watchers International to offer their weight loss program in the South Bronx to participants with limited incomes at 75% off the normal cost. On average, more than 30 participants attended each week, losing over 430 pounds in total—tangible results to inspire change.

**"CITY HARVEST CAN SERVE AS A CATALYST FOR CHANGE BY CONNECTING THE COMMUNITY WITH RESOURCES AT THE INDIVIDUAL AND FAMILY LEVEL."**



**“WE FOUND THAT THE GAP BETWEEN THE FOOD NEW YORKERS HAVE AND WHAT THEY NEED IS SUBSTANTIAL.”**



**THE NEXT STEP FOR CITY HARVEST**

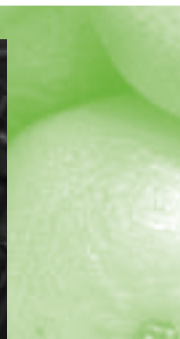
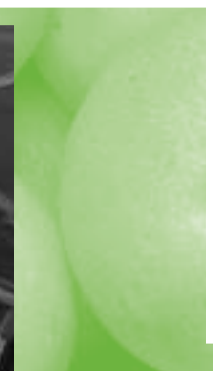
City Harvest’s mission to fight hunger with available resources like rescued food is one that everybody can get behind. This year, City Harvest was one of three charities recognized for management excellence at the 2011 New York Times Company Nonprofit Excellence Awards, selected by a committee of 26 distinguished leaders in the nonprofit community. Over the last 29 years, we have become the charity of choice for New Yorkers who want to ensure their hungry neighbors have the nutritious food they need. Some 39,000 financial donors lent strong support to our work in fiscal year 2011. Over 2,200 volunteers and thousands of generous food donors drove our daily operations.

This is a strong platform from which City Harvest can map our future. We recently completed a strategic plan, analyzing the most recent data available about hunger in our city and consulting more than 80 outside stakeholders to create a vision for City Harvest. We found that the gap between the food New Yorkers have and what they need is substantial. City Harvest’s plan for the future envisions a leading role for us in working to close it.

City Harvest now faces a watershed moment. More than one million New Yorkers turn to emergency food each year. Three million New Yorkers live in “food deserts” where healthy food is less available. Diabetes has increased 250% in New York City since 1997. In the face of these challenges, City Harvest is stepping forward with a vision for New York City where good food is not out of reach.

In April, we signed a lease on a food rescue facility in Long Island City, Queens to help ensure that programs receive more of the type of food they need most on the local level and to help us quickly move produce from outside the city onto our trucks and out to people in need. In coming years, we will also expand our efforts to transform the food landscape in high-need communities through *Healthy Neighborhoods*.

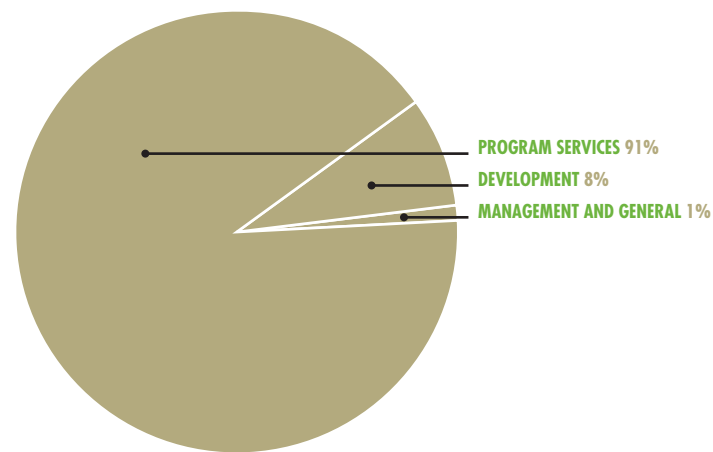
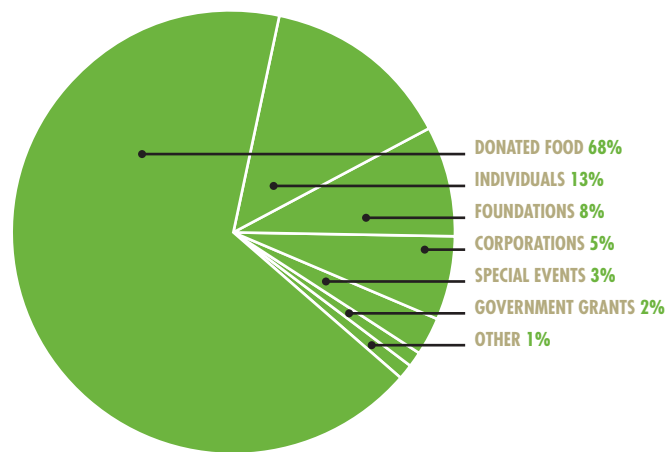
As more of our neighbors are likely to need help putting food on the table for a prolonged period of time in the shadow of the recession, City Harvest will depend on a base of solid support. The road ahead takes the City Harvest New Yorkers know and love to the next level, for even greater impact.





STATEMENTS OF FINANCIAL POSITION

	JUNE 30, 2011	JUNE 30, 2010
<b>ASSETS</b>		
Cash and cash equivalents	\$ 10,764,633	\$ 8,993,167
Contributions receivable, current portion	1,304,854	1,130,103
Grants and awards receivable	513,086	433,001
Prepaid and other current assets	299,329	341,357
Investments	612,097	312,032
Property and equipment, net	1,668,656	1,084,284
Contributions receivable, net - long-term portion	474,202	744,809
Deferred lease costs	17,560	31,730
Security deposits	307,276	173,377
<b>Total net assets</b>	<b>\$ 15,961,693</b>	<b>\$ 13,243,860</b>
<b>LIABILITIES AND NET ASSETS</b>		
Accounts payable	\$ 623,112	\$ 344,432
Accrued expenses	1,074,146	633,194
Leases payable, current portion	160,726	97,888
Deferred rent	220,038	275,957
Leases payable, long-term portion	558,441	354,131
<b>Total liabilities</b>	<b>\$ 2,636,463</b>	<b>\$ 1,705,602</b>
<b>NET ASSETS</b>		
Unrestricted	\$ 9,087,458	\$ 8,688,138
Temporarily restricted	3,906,425	2,850,120
Permanently restricted	331,347	-
<b>Total net assets</b>	<b>\$ 13,325,230</b>	<b>\$ 11,538,258</b>
<b>Total liabilities and net assets</b>	<b>\$ 15,961,693</b>	<b>\$ 13,243,860</b>



STATEMENTS OF ACTIVITIES (WITH SUMMARIZED FINANCIAL INFORMATION FOR 2010)

	UNRESTRICTED	TEMPORARILY RESTRICTED	PERMANENTLY RESTRICTED	YEAR ENDED JUNE 30, 2011 TOTAL NET ASSETS	2010 TOTAL NET ASSETS
<b>PUBLIC SUPPORT AND REVENUE</b>					
<b>PUBLIC SUPPORT</b>					
Donated food	\$ 40,819,359	\$ -	\$ -	\$ 40,819,359	\$ 36,119,775
Donated vehicle	-	-	-	-	144,882
Corporations	2,902,676	27,850	-	2,930,526	3,081,032
Foundations	3,532,112	841,050	300,000	4,673,162	4,526,584
Individuals	7,031,179	572,057	-	7,603,236	7,377,781
Other organizations	236,808	-	-	236,808	221,051
Special events <i>(net of direct benefits to donors of \$952,267 in 2011 and \$918,632 in 2010)</i>	2,142,167	-	-	2,142,167	1,583,848
<b>Total public support</b>	<b>\$ 56,664,301</b>	<b>\$ 1,440,957</b>	<b>\$ 300,000</b>	<b>\$ 58,405,258</b>	<b>\$ 53,054,953</b>
<b>REVENUE</b>					
Government grants and awards	\$ 1,115,248	\$ -	\$ -	\$ 1,115,248	\$ 802,492
Investment income	68,756	-	31,347	100,103	26,696
Other income	136,565	-	-	136,565	89,084
<b>Total revenue</b>	<b>\$ 1,320,569</b>	<b>\$ -</b>	<b>\$ 31,347</b>	<b>\$ 1,351,916</b>	<b>\$ 918,272</b>
Net assets released from restrictions	384,652	(384,652)	-	-	-
<b>Total public support and revenue</b>	<b>\$ 58,369,522</b>	<b>\$ 1,056,305</b>	<b>\$ 331,347</b>	<b>\$ 59,757,174</b>	<b>\$ 53,973,225</b>
<b>EXPENSES</b>					
<b>PROGRAM SERVICES:</b>					
Food distributions	\$ 47,407,109	\$ -	\$ -	\$ 47,407,109	\$ 41,748,675
Food operations	5,521,831	-	-	5,521,831	4,690,640
<b>Total program services</b>	<b>\$ 52,928,940</b>	<b>\$ -</b>	<b>\$ -</b>	<b>\$ 52,928,940</b>	<b>\$ 46,439,315</b>
<b>SUPPORTING SERVICES:</b>					
Management and general	\$ 515,831	\$ -	\$ -	\$ 515,831	\$ 495,905
Development	4,525,431	-	-	4,525,431	4,018,725
<b>Total supporting services</b>	<b>5,041,262</b>	<b>-</b>	<b>-</b>	<b>5,041,262</b>	<b>4,514,630</b>
<b>Total expenses</b>	<b>\$ 57,970,202</b>	<b>\$ -</b>	<b>\$ -</b>	<b>\$ 57,970,202</b>	<b>\$ 50,953,945</b>
Change in net assets	\$ 399,320	\$ 1,056,305	\$ 331,347	\$ 1,786,972	\$ 3,019,280
Net assets - beginning of year	8,688,138	2,850,120	-	11,538,258	8,518,978
<b>Net assets - end of year</b>	<b>\$ 9,087,458</b>	<b>\$ 3,906,425</b>	<b>\$ 331,347</b>	<b>\$ 13,325,230</b>	<b>\$ 11,538,258</b>



11th Annual Nonprofit Excellence Awards

## CORPORATIONS & FOUNDATIONS

Thousands of generous corporations and foundations supported City Harvest's fight against hunger last year.

### \$250,000+

American Express Foundation\*+  
The Clark Foundation+  
Credit Suisse  
Feeding America  
Horizon Media  
The Kresge Foundation  
The New York Times Neediest Cases Fund  
Robin Hood  
W.K. Kellogg Foundation

### \$100,000-\$249,999

Anonymous  
Barclays Capital  
BlackRock\*  
Citibank\*  
Duane Reade, Inc.  
The Sol Goldman Charitable Trust  
Le Bernardin, Inc.  
Henry and Lucy Moses Fund, Inc.  
The New York Community Trust  
PepsiCo\*  
Stavros Niarchos Foundation+  
Vital Projects Fund, Inc.  
The Walmart Foundation

### \$50,000-\$99,999

Louis and Anne Abrons Foundation, Inc.  
Anonymous  
Margaret A. Cargill Foundation+  
Discovery Communications, Inc.  
FJC  
Charles A. Frueauff Foundation, Inc.  
Oceanic Heritage Foundation\*  
The Starr Foundation

### \$25,000-\$49,999

The Achelis Foundation  
AETN - A&E Television Networks  
The Barker Welfare Foundation+  
Bloomberg  
Chef Driven Inc.  
Frank E. Clark Charitable Trust  
The Concordia Foundation  
Empire Merchants LLC  
Ernst & Young, LLP\*  
Food for Needy, Inc.  
Robert V. Hauff & John F. Dreeland Foundation  
KPMG LLP\*  
Macy's\*  
McKinsey & Company\*  
The Ambrose Monell Foundation  
National Association for the Specialty Food Trade, Inc.

Richmond County Savings Foundation  
May and Samuel Rudin Foundation, Inc.+  
Charles and Mildred Schnurmacher Foundation, Inc.  
Share Our Strength  
The Seth Sprague Educational and Charitable Foundation  
The Staten Island Foundation  
Target  
Time Inc.\*  
Tsunami Foundation - Anson M. Beard Jr. and Family  
The Ruth Turner Fund, Inc.  
UnitedHealthcare\*  
United Way of New York City  
The Wallace Genetic Foundation  
The Wasily Family Foundation

### \$10,000-\$24,999

The Herbert Allen Foundation  
American Century Foundation\*  
American Express Publishing\*  
American Sommelier  
Ameriprise Financial\*  
Anonymous  
Lily Auchincloss Foundation, Inc.  
Rose M. Badgeley Residuary Charitable Trust, HSBC Bank USA, N.A., Trustee  
Balance Bar Company  
Bank of America\*  
The Bank of New York Mellon  
The Theodore H. Barth Foundation, Inc.  
BET Networks  
The Blackstone Group  
BRAVO Media  
Cablevision  
Calvin Klein  
The Capital Group Companies Charitable Foundation\*  
CBS Radio  
Citarella  
CME Group Community Foundation  
Deutsche Bank\*  
DLA Piper US, LLP\*  
Epstein Teicher Philanthropies  
GE Energy Financial\*  
GIC Asset Management Pte Ltd  
The Goldie Anna Charitable Trust  
Google\*  
The Green Fund, Inc.  
The Indian Point Foundation  
Interpublic Group\*  
The Rona Jaffe Foundation  
Johnson & Johnson  
The Donna Karan Company, LLC  
Lamb & Barnosky, LLP  
The LB & TD Foundation  
Le Parker Meridien  
Leaves of Grass Fund  
The Herman Lissner Foundation  
Demarest Lloyd Jr. Foundation  
Lord, Abbett & Co. LLC  
Macquarie Group Foundation\*

Nespresso  
Nicholas Martini Foundation  
Mellam Family Foundation  
NBC Owned Television Stations  
NBCUniversal  
New York Stock Exchange\*  
The New York Times Company  
Henry Nias Foundation, Inc.  
Nielsen\*  
NY Tech Gives Back  
P/Kaufmann Inc.  
Pillsbury Winthrop LLP  
Pret A Manger  
The Louis and Harold Price Foundation, Inc.  
Random House, Inc.\*  
The Morris and Alma Schapiro Fund  
Sarah I. Schieffelin Residuary Trust  
Murray G. & Beatrice H. Sherman Charitable Trust  
The Skirball Foundation  
Ernst C. Stiefel Foundation  
Solon E. Summerfield Foundation, Inc.  
John T. Underwood Foundation  
Union Square Hospitality Group, LLC  
Valentino  
Van Wagner Communications LLC  
Viacom, Inc.  
Victor's Café  
The Wachovia Wells Fargo Foundation  
Weight Watchers  
Whole Foods Market

### \$5,000-\$9,999

ABC, Inc.  
Allen & Company  
Alliance Capital Management\*  
Andrews Kurth LLP\*  
Anonymous  
Aurelius Capital Management, LP  
The Geoffrey Beene Foundation  
Bird  
Edith C. Blum Foundation, Inc.  
Buccellati  
Broadfn Capital, LLC  
C. V. Starr & Co., Inc.\*  
Cadbury  
Chapdelaine & Co.  
Chartis  
Cofra North America, Inc.  
Delivery.com  
Diamondston Foundation  
E.M. Warburg, Pincus & Co., Inc.  
Entertainment Weekly  
Epoch Investment Partners, Inc.  
Experian CheetahMail  
FactSet Research Systems Inc.  
FoodMatch Inc.  
FreshDirect  
Gawker Media  
The GE Foundation\*  
Gottbetter & Partners, LLP  
Great Performances  
GroupM

Heartland Foundation  
Hewitt Associates Foundation  
ING U.S. Financial Services LLC\*  
Kraft Foods  
Lowenstein Sandler PC  
LUCKYRICE  
The Lucius N. Littauer Foundation  
MacDonald - Peterson Foundation  
Macmillan  
Marc Jacobs Inc.  
Manolo Blahnik USA Ltd.  
Marriott International, Inc.  
The McGraw-Hill Companies\*  
MDC Partners  
New York Media LLC  
Newmark Knight Frank  
Olmstead Properties, Inc.  
Paperless Post  
Patterson Belknap Webb & Tyler LLP  
Pershing Square  
RBS  
Realm Partners LLC  
Jack Resnick & Sons Inc. Management  
Ernest & Rose Samuels Foundation  
Shelter Fund of Tides Foundation  
Simon Gift Cards Litigation Settlement Fund  
SL Green Realty Corp.  
Sodexo  
SUSHISAMBA  
Michael Tuch Foundation, Inc.  
UMT Consulting  
Weil, Gotshal & Manges LLP  
M.B. & Edna Zale Foundation+

## GOVERNMENT

The support provided by these agencies helped City Harvest continue our work to improve access to healthy food in low-income communities

### \$250,000+

New York City Council  
U.S. Department of Housing and Urban Development+  
U.S. Department of Agriculture - National Institute of Food and Agriculture

### \$100,000-\$249,999

New York State Department of Health - Hunger Prevention and Nutrition Assistance Program  
State of New York Office of the Attorney General  
New York City Department of Youth and Community Development

+Denotes a multi-year grant

\*These companies also generously provided employee matching gifts

### \$50,000-\$99,999

New York City Department of Health and Mental Hygiene  
Emergency Food and Shelter Program at United Way of New York City

### \$25,000-\$49,999

Office of the Manhattan Borough President Scott M. Stringer

## INDIVIDUALS

City Harvest is made possible because of the generous support of donors who believe in our work. The dedication of these donors and thousands more like them allows us to continue the fight against hunger in New York City.

### \$500,000+

Lois M. Collier  
Bill and Jessica Koenigsberg  
Heather and Steven Mnuchin/  
The Steven and Heather Mnuchin Foundation

### \$250,000-\$499,999

Jean L. and Robert A. Stern Foundation

### \$100,000-\$249,999

Estate of Harold Ahrens  
Lise and Michael Evans  
Stacy and Joel Hock  
Mr. Patrick Mauro  
Eric Ripert and Maguy Le Coze, Le Bernardin

### \$50,000-\$99,999

Catherine and Joseph Aresty Foundation  
Borrego Foundation, Inc.  
Nina Rennert Davidson and Mitchell Davidson  
Harry and Misook Doolittle Foundation  
Joy Ingham  
Alison and Jim Kallman  
Pamela and Andrew Kaufmann  
Mr. Joshua J. Lee  
Kerrie D. MacPherson and David A. Gatchell  
The Marie-Josée and Henry R. Kravis Foundation  
Elizabeth and Clement Moore  
Daniel D. O'Neill  
Robert and Lorraine Reeder  
Ernest E. Stempel Foundation  
Watermill Trading

### \$25,000-\$49,999

The Eugene and Carol Atkinson Family Foundation  
The Bensonhurst Foundation  
Alex and Jacqueline Berenson  
Bergen Foundation  
Richard S. Berry and Lucy A. Commoner  
Margaret and Randy Brown  
Mr. Robert L. Cahill, Jr.  
Kimberly Cooper  
The Durst Family Foundation  
Zvi Eiref  
Jeanne Donovan Fisher  
Kathleen Fisher  
Estate of Patricia R. Galen  
Kris and Marc Granetz  
Chris and Tom Guba  
Chris Hikawa  
Ms. Kevin Hogan and Mr. Timothy J. Croak  
Sharon H. Jacquet  
Abram and Ray Kaplan Foundation  
Grace Koo and Kerry Heffernan  
The Ruth and David Levine Charitable Fund  
MacAndrews and Forbes Holdings, Inc.  
Estate of Irwin Mandel  
Thomas and Paula McInerney  
David and Katherine Moore Family Foundation Fund  
Ms. Pamela Schein Murphy and Chef Marc Murphy  
George and Abby O'Neill  
Rachael Ray and John Cusimano, Watch Entertainment  
The Susan Sarandon Charitable Foundation  
Mrs. Topsy Taylor  
Jill and Jeffrey Weiss  
Michael A. Young  
Natalia Zaldivar-Bonzon

### \$10,000-\$24,999

Seth and Stephanie Alpert  
Shirley and Kemal Askar  
Askin Family Fund  
Herbert and Phyllis Bachelor Charitable Gift Fund  
The Sandra Atlas Bass and Edythe and Sol G. Atlas Fund, Inc.  
Melissa A. Berman and Richard Klotz  
Scott L. and Roxanne Bok  
Mr. and Mrs. Richard R. Bonaventura  
Mr. Zachary Braff  
Mr. Matthew C. Bryant  
Daniel and Patricia Bumgardner  
Dana B. Cowin  
Paul Curnin and Penny Shane  
Hester Diamond Fund  
Paul and Jennifer Diamond  
Joseph and Diana DiMenna  
Edith and Robert Du Puy  
Rita Duggan  
Durland Co., Inc  
Martin E. Elling  
Anna and Jim Fantaci

Mr. Jason I. Feldman  
Estate of Barry Futerssak  
Cathy Glaser and Steve Semlitz  
Richard and Linda Goldstein  
Haimes Family Foundation  
Halis Family Foundation  
Ms. Anita Hoffman  
Mr. and Mrs. Jim Hurley  
Jewish Communal Fund  
Pat and Paul D. Kaplan  
Samantha and Sheldon Kasowitz  
Fred E. Kassner Family Foundation  
Laurie Kayden Foundation  
David P. Kirchhoff  
Maria C. Klink  
Rebecca and Richard Koenigsberg  
Krell Family Foundation  
Barbara and Mark Kronman  
Mark and Cheryl Labelle  
Ralph Laucella  
Yoko Ono Lennon  
Mr. and Mrs. Ira A. Lipman  
Richard and Karen MacLeod Charitable Lead Annuity Trust  
The Mailman Foundation  
Nicholas V. Mautone, Jr.  
Worthington Mayo-Smith Fund  
Leslie Sutton McGauley and Mark W. McGauley  
Medical Management Solutions  
Melkus Family Foundation  
Bob and Lisa Ann Miller  
Dr. Martin A. Nash  
Daniel M. Neidich and Brooke Garber Foundation  
Alissa and Bruce Nierenberg  
Barbara G. Novick  
Sylvan and Ann Oestreicher Foundation, Inc.  
Becca Parrish, BeccaPR  
Peco Foundation  
Marvin Pestcoe and H. Elizabeth Mitchell  
Carol Pledger  
Stephen and Melinda Post  
Maureen and Joe Roxe / The Roxe Foundation  
Emilia A. Saint-Amand  
Jennifer Schneck  
Mr. and Mrs. Michael I. Schwartz  
H. Eric Semler and Tracy Chutorian Semler  
Richard J. Smilow  
David G. Sommers  
Lois and Arthur Stainman  
Antonia Stolper and Robert Fertik  
Emily H. Susskind  
Zubin Taraporevala  
Edward Tom  
Peggy Van Munching  
Mr. and Mrs. Charles G. Ward  
Adam and Abigail Winkel  
The Winters Family Fund  
Peter E. Wunsch  
Ann Ziff

### \$5,000-\$9,999

Leigh J. and Carrie C. Abramson  
Acorn Hill Foundation, Inc.  
Marjorie and Steven Adams  
Carl Adkins and Dianne Balfour  
The Anbinder Family Foundation  
Estate of Joan Antonucci  
Mr. David Archer  
Babbitt Family Charitable Trust  
Mr. Arthur F. Backal  
Edward and Susan Bernstein  
Ashish and Leslie Bhutani  
Penelope and John Biggs  
Jay and Gabriela Bockhaus  
Sarah and Michael Bolin  
Bresnan Family Fund  
Bridgemill Foundation  
Anne Brimberg  
Ann Bronfman  
Mary and Craig Brundage  
Mr. David G. Burnett and Dr. Claire L. Gaudiani  
The Cahn Family Foundation  
The Vincent Camuto Charitable Trust  
Jonathon Canarick  
Graydon Carter  
The Chervenak-Nunnalle Foundation  
Maria and Frank Chioldi  
Myoung S. R. Choi  
Constance Chorman  
Philip P. Cialdella  
The Steven A. and Alexandra Cohen Foundation, Inc.  
The Stephen Colbert Americone Dream Fund of Coastal Community Foundation of SC  
G. David and Joan Cole  
Mr. James H. Coleman  
Ms. Laura Corb  
Stuart and Betty Cotton  
Dancing Tides Foundation  
Judith and Kim Davis  
Gordon and Lorraine DiPaolo  
Gopa and Jay Dobson  
Dr. Joy to the World, Inc.  
The Charles Engelhard Foundation  
Ficks Family Foundation  
The Forsyth - Marchini Charitable Fund  
Joel Frank  
Peter Friedman  
Sarah and Michael Gerstenzang  
Ms. Cathe Giffuni  
Dr. Alan Goodman  
Seth Grosshandler and Kim Wainwright  
Theresa and Kevin Gurl  
Margaret Hannigan and Michael Swier  
Elisabeth and H. Peter Haveles, Jr.  
Wesley and Betsy Higgins  
Hilibrand Foundation  
Mr. John Holmes  
Holzer Family Foundation  
John E. Hull  
Pamela Jarvis and Anthony E. Davis

The Ken and Judith Joy Family Foundation  
Ann F. Kaplan  
Herb Karlitz  
The Katzin Foundation  
Nancy and John Kelly  
Eleanora Kennedy  
Mr. and Mrs. John Kim  
Charles Kime and Deirdre DeSteno  
John Knight  
Coco and Arie L. Kopelman  
Ms. Stephanie Krieger  
Peter and Deborah Lamm Foundation  
Patricia A. Lanza  
Mr. Matthew Lauer  
Bernard and Muriel Lauren Foundation  
Richard S. and Karen LeFrak Charitable Foundation, Inc.  
Todd and Nancy Lenart  
Michael S. Lewin  
Greg Lippmann  
Marc and Jennifer Lipschultz  
The Litwin Foundation  
Arthur L. Loeb  
Ambassador John L. Loeb and Sharon J. Handler  
Marshall Makstein  
Alexander Maldutis  
Burton G. and Nancy W. Malkiel  
Susan and David Marcinek  
Sue and Gregory Marks  
Susan and Robert McCaw  
John P. and Anne Welsh McNulty Foundation  
Estate of Doris Tofila McQuivey  
Rod Millott and Jaq Belcher  
Mr. and Mrs. Sylvester F. Minitier IV  
Mr. Albert S. Mishaan  
Leo Model Foundation, Inc.  
James and Lauren Molloy  
Mr. Alexander F. Moore  
Diana Moore  
Michael P. Morrell and Anne Marie Morrell  
Carrie and Darren Mulholland  
Mr. Michael S. Needleman  
The Dorothy and Mark Nelkin Charitable Fund  
Tracy Nieporent, Nobu & Tribeca Grill  
Ms. Cynthia Nixon  
Diane A. Nixon  
John O'Connor  
William O'Neill  
Anna Lynn and Stephan Oppenheimer  
John K. Orberg  
Lauren and Scott Pinkus  
Patricia Poglioco and Geoffrey Stein  
Judy Polzer and Julian Flear  
The Cristofer Puleo Charitable Fund  
Mrs. Nina B. Quigley and Mr. Matthew W. Quigley  
Linda Ransom and James Capra  
Red Crane Foundation  
Richard and Heidi Rieger

Joshua Ring Philanthropic Fund  
Marie and David Ritter  
Michael and Lisa Rome  
Mr. Michael S. Rosenthal  
The David and Eleanore Rukin Philanthropic Foundation  
Schifter Family Foundation  
Louis and Geraldine Scotto  
Michelle and Scott Sherman  
Susan Stein Shiva Foundation  
George Siber  
David and Patricia B. Silvers  
Ms. Abby R. Simpson  
The Sloman Foundation  
Grant and Jacqui Smith  
Mr. Richard W. Smith  
Mr. Michael E. Sproule  
John Stage  
The Stainrook Foundation  
Mr. Steven Storch  
John Storey  
Clifton and Gina Strain  
Steven and Alexis Strongin  
The Milton Tenenbaum Charitable Foundation  
Robin and Rachel Thebault  
Mr. Richard C. Thompson  
Amanda and Christopher Timchak  
Ullmann Family Foundation, Inc.  
Anna and Michael Vranos  
Dawn and Robert Watt  
Gary and Nina Wexler  
Whispering Bells Foundation  
Estate of Elizabeth N. Wilds  
David Wilson  
The Robert W. Wilson Charitable Trust  
Stanley and Judith M. Zabar  
Sheri Roder and Rich Zahradnik  
Dirk E. Ziff Foundation  
Dirk and Natasha Ziff  
Caryn and Jeff Zucker

**\$2,500-\$4,999**

Barbara Ann Abeles  
Nina Abrams Fund  
Don and Jean Ackerman Charitable Lead Annuity Trust  
Mr. Jonathan Ackerman  
Adelson Family Foundation  
Akhoury Foundation, Inc.  
Howard and Sara Altschul  
Peter and Betty J. Anderson  
Mr. and Mrs. Dwight I. Arnesen  
Ellen L. Asher  
Ms. Terri L. Asiel  
Peter J. Axilrod  
Michael Barr and Susan Learner Barr  
Paul Barrett  
Elizabeth Bartlett  
Edward Bazinet  
Ms. Leora Ben-Ami  
Lawrence B. Benenson  
Michael Bennett  
Mr. Kevin I. Berg  
Arlene and Michael Berner

Thomas Bernhard and Deborah Goldberg  
Sarah Billingham and Howard Solomon  
Mr. and Mrs. Joshua Blaine  
A. J. Bocchino and Phoebe Washburn  
Anthony and Mary Ellen Bonomo  
David S. Brady and Birte Wistinghausen  
Nancy and Charles Bramham  
Jonathan L. Brandt  
H. Brett and Samantha Humphreys  
Mrs. Barbara C. Brody and Mr. Christopher W. Brody  
The Brook Fund Inc.  
Susan Buckley and Lance Sherman  
The Burman Family - Ron, Nina, Lulu & Eli  
Richard D. Burns  
Mr. John Calderon  
Calico Fund  
Margaret Calkins Charitable Foundation  
Jennifer and Thane Carlston  
Nathaniel and Elizabeth Carr  
The Bonnie Cashin Fund  
Jonathan J. Cohen  
Joseph F. Coleman  
Andrew Collis  
The Colyton Foundation  
Cooper Family Foundation  
John and Wendy Cozzi  
Catherine V. Curry and Andres V. Gil  
Cameron Curtis  
Adam D. Cutler and Nova Nassim Cutler  
Leslie and Bob Dahl  
Arthur and Carolynne DeGaetano  
Robert and Marylee Diamond  
Victor J. DiGioia, Esq.  
Gregory and Karen Dimit  
Doppelt Family Foundation  
Jeffrey and Nancy Dowling  
Arden D. Down  
James H. Duffy  
Ms. Joanne F. Dunbar  
Cara Eisen  
Ms. Lesley Eldridge  
Mr. Martin Elias  
Michael Emblar and Maria Cilenti  
Mr. And Mrs. Brian Ezratty  
Ms. Peggy Farber  
Nicole and Ryan Fealey  
Maurice and Carol Feinberg Family Foundation  
Mr. David B. Feinstein  
Joshua A. Feltman  
Jeffrey and Leslie Fischer  
Ms. Jamie Flesh  
Mr. and Mrs. Darren Fogel  
Fosdick Fund  
Ariela and Jason Friedman  
Mr. David Garner  
Michelle and Gino Gennari  
Liane Ginsberg Family Fund  
Gerry and Irwin Goldberg  
Sharon and David Goldfarb

Dr. and Mrs. Corey Goldfeder  
Donna and Perry Golkin  
Mr. Stephen Gray  
Christina Grdovic-Baltz and Phillip Baltz  
Ms. Jill Greenwald  
Elizabeth Tracy Grinnell  
Richard and Ronnie Grosbard  
Geoffrey Gund  
The Robert G. and Ellen S. Gutenstein Family Foundation, Inc.  
Thomas E. Harvey and Cathleen P. Black Fund  
Mr. and Mrs. Keith Heffernan  
Robert R. Henry  
HNS Charitable Gift Fund  
Margo and Paul J. Hooker  
Edith Hornor  
Craig and Andrea Horowitz  
The Pamela Howard Foundation, Inc.  
Chloe M. Jacobs  
Kerry and Jim Jacobson  
Carl and Sandy Jaffee  
James and Marie Johnston  
Patricia Jones  
Richard Kandel  
Erica and Michael Karsch  
Michael Kassan, MediaLink  
Alan Katz  
Gershon Kekst  
Ashley and Nathanel Kelley  
The Honorable Cynthia Kern and Ms. Jane Boisseau  
Mr. Jeffrey W. Kern  
Kirby Family Foundation, Inc.  
Mr. Richard Kirtley  
Mr. David Knott  
Gilad Kuperman and Marie Murphy  
The Woo and Alice Kwong Charitable Fund  
Margo Langenberg  
Myung S. Lee  
Suzanne and Richard Leeds  
Anne Claire Lester Foundation, Inc.  
Pamela J. Levine  
Tammy and Jay Levine  
Charlton M. Lewis  
Marjorie R. Lewis  
Victor and Leslie Lewkow  
Michelle Lieber and David Sutton  
Mr. and Mrs. Thomas Lincoln  
Emma Lindsay and Shaun Gatter  
Elicia Ling  
Milan D. Lint  
Arnold and Pamela Loeb  
Dr. Nancy Long and Mr. Marc Waldor  
Mr. Erik Lund  
Kevin and Sheryl Lupowitz  
Rachel Lurie  
William R. Maguire  
Mako Foundation  
Martin Maleska  
Jeanne Manischewitz  
Mr. and Mrs. Paul A. Masco  
Ms. Kara Masi  
Mr. Andrew Mathias

Mr. and Mrs. Theodore Mayer  
Sean McCaffrey  
Ms. Ashley McCarthy  
Paul and Alice McTigue  
Constantin and Gabriella Melinte  
Richard and Ronay Menschel  
Brian J. and Heidi G. Miller  
Nadine A. Mirchandani  
Mrs. Siri Mortimer  
National Philanthropic Trust  
Win and Christie Neuger Family Foundation  
Ms. Adina Newman  
Hope and Joshua Newman  
Ms. Rebecca Obley  
Helen O'Donnell  
Kevin and Eileen O'Neill  
Rosemary O'Toole and Christopher Young  
David P. Owens  
The Pardoe-Westermann Family  
Martha Moeller Parke and Rob Parke  
Mr. Maurice Passy  
Donald A. Pels and Wendy Keys  
Lori Perlow  
Dan Pezley  
Mr. John Philo  
Nancy Pierson  
Carole Pittelman  
Mr. and Mrs. Thibaut Pizenberg  
Lev Polinsky  
John Quisenberry  
Ms. Maria Ramos  
Roslyn Raskin  
Amy and Jay Regan  
Joanie and Maurice Reznik  
Philip W. Riskin Charitable Foundation Inc.  
Meile L. Rockefeller  
Charles and Karen Roemer  
Chris Rogers  
Warren Paul Rosenstein  
Mr. and Mrs. Laurence B. Rossbach, Jr.  
The David & Eleanor Rukin Philanthropic Foundation  
Maureen Ryan and Erik Hepler  
Rohit and Ruchika Sah  
Mr. Todd Sandoz  
John F. Savarese and Lynn M. Ashby-Savarese  
Daniel and Janet Scapin  
Rony Schlapfer  
Mrs. Cynthia A. Schlegel  
David and Toni Schoen  
Schwab Charitable Fund  
Gail M. Scripko  
Robert Scull  
William Sealey  
Thilo and Angelica Semmelbauer  
The Shapiro Family  
Kenzie Shaw  
Neal and Jacqueline Shear  
Lewis and Ariel Silberman  
Adam and Stephanie Simon  
David Sloan

Dr. Richard Sloan and Dr. Jessie Gruman  
The Sobel Family Foundation, Inc.  
Marc A. Somborg Memorial Foundation  
Beverly Sommer  
Jilly Stephens  
Nicholas Stephens and Lisa Kunstader  
Lauren Stelzer  
Sundheimer Foundation, Inc.  
Chris Szymanczyk  
Tarshis Family Foundation  
David and Leigh Taub  
Nancy B. Taylor  
Ms. Judy Tchou  
Frederick Tetzeli  
Gabe and Angie Tsuboyama  
Kathleen Ulrich and Stephen Gray  
Mr. Mitchell H. Umanoff  
Paul Varkell  
Gordon Veneklasen  
Arlene E. Vogel  
Louise Wakin  
Mr. Peter B. Walker  
Elaine and Alan Weiler  
Glenn and Nancy Whitney  
Estate of Sarah Wieder  
Michael and Zena Wiener  
Phyllis Wiener  
Mr. Scott Wiener  
Wayne Williams  
Mrs. Margo S. Wintersteen  
Mr. Peter Van Witt  
Katie Workman and Gary Freilich  
The Young Family

**\$1,000-\$2,499**

Diane and Arthur Abbey  
Ms. Alexandra Aboulafia  
Mr. and Mrs. William R. Acquavella  
Dennis Adler and Robin Aronow  
Frances Beatty Adler  
Roger E. Ailes  
Patricia Ainsworth  
Dr. and Mrs. Louis Aledort  
Joseph Alfieri  
Joseph Allen and Annette Tapert Allen  
Mark Almeida and Theresa Galvin  
Stewart and Daisy Alter  
Eric Altmann  
Michael Alvarez  
Robert Amdur  
Mr. and Mrs. Maurizio Ameri  
Karen and Scott Amero  
Ecetra N. Ames  
Bijan Amini  
Andrew J. Feldman Foundation  
Patricia S. Andrews  
John Angelo  
Alan and Lillian Applebaum  
Irwin Arieff and Deborah Baldwin  
Mr. Bobbi Arnold  
Linda Aronoff  
David Arquette  
E. Nelson Asiel

Vittorio Assaf  
Joshua and Jacqueline Astrof  
John Atkins and Vanessa Hradsky  
Sally Auer and F. Anthony Zunino  
Leonard D. Auerbach  
Mr. and Mrs. Richard A. Axilrod  
Bachman Family Charitable Fund  
Marion Bachrach and Jonathan Siegfried  
Mr. Anthony Baer and Ms. Leta Margaret Barry  
Christina and Robert Baker  
Lisa and Richard Baker  
Arvind Balasundaram  
Nealoy Bandyopadhyay  
Eugene A. Banks  
Leslie Barbi  
Thomas Barrick  
Thomas Barry and Susan Waltman  
Judith Bartlett  
Lewis Bateman  
Richard L. Bates  
Jonathan S. Bauer  
Kathryn and Gentry Beach  
Cathy and Stewart Becker  
Dori and John Beckhard  
The Bedminster Fund, Inc.  
Lawrence Bellone and Sarah Smith  
Janet Bellucci  
Charles Bennett, Mary Bennett and Carol Pencke  
Mr. Michael D. Bennett and Dr. Juan J. Battle  
David J. Berenson  
Mr. Craig Beresin  
Bruce F. and Abbey L. Berg  
Mr. Drew Bergman  
The Berlin Family Foundation  
Mr. and Dr. Bill Belmont  
Mitchell and Adrienne Bernard  
Mr. and Mrs. Stuart Berni  
Jill and Robert Bernstein Charitable Gift Fund  
Mr. Robert Bernstone  
Berton Family Charitable Foundation  
Alysse Bezahler  
Rajeev Bhaman  
Anju Gupta and Subhash C. Bhatia  
Mr. George D. Bianco  
Peter and Marilyn Biggins Fund  
Anne L. Binkley  
Birny Mason Jr. Foundation  
Mr. Erik Bisso  
Michael and Pamela Bless  
Mr. Sanford R. Block  
Harold and Jeanne Bloom  
Nancy Blumenthal  
Peggy Blumenthal  
Jeff M. and Jenine Bockman  
Bob Bond  
Rebecca Bond  
Mr. Jonathan Z. Bornstein  
Alastair Borthwick  
Laura Botsacos  
Brian Bosworth  
Helga Boughal  
Sandra Bowers and Ralph Walter

Laura S. Boylan, M.D.  
Joseph Brady  
Thomas and Inbal Brener  
Stuart Breslow and Anne Miller  
Margery A. Brittain  
Jack and Sara Broderick  
Charles Bronfman  
Lynn and Stanley Brooks  
Adam Brown  
David S. Brown  
Elliot H. and Victoria E. Brown  
Mr. Thomas Bruno  
James O. Buchanan  
Mr. and Mrs. William J. Buckley  
Deborah M. Buell and Charles S. Henry  
Jess Bunshaft  
Mr. Thomas Buonora  
Robert and Judith Burger Philanthropic Fund  
Walter and Constance Burke  
James M. and Karen M. Burnosky  
Peter B. Busschbach  
Doug and Kathy Butler  
Patricia A. Cabot  
Angela and Tanggol Caes  
Douglas H. Calby  
Mr. and Mrs. Joseph A. Califano, Jr.  
Ms. Jill Callahan  
Mary Rockefeller Morgan Callard  
Louis and Karyn Callegari  
Jeanne and Malcolm Campbell  
Jennifer Frankel and Peter Campbell  
Mr. and Mrs. Andrew J. Campelli  
Loretta V. Cangialosi  
Mary and Robert Capaldi  
Carlos and Ana Capellan  
Catherine and Robert Carangelo  
Mr. Douglas J. Cardoni  
Mark E. Carney  
Patricia Carroll  
Deirdre A. Carson  
Chuck and Gail Caulkins  
Mr. Henry G. Cercone  
The Phyllis and Bennett Cerf Foundation  
Norman and Heewon Cerk  
Gerald E. Chait  
Mr. Anit Chakraborty  
Jennifer A. Chalsty Foundation  
Kang G. Chan  
Viren Chandrasoma  
Lucy Cheng  
Ralph Chipman  
Donna Christensen and Holt Smith  
Henry Christensen III  
Louis M. Ciccone  
Diane Citron and John F. Oates  
Mark and Claudia Clancy  
James J. Clark  
John B. Clemente  
Daniel J. and Kay R. Cohen  
Saara Cohen  
Lewis C. Cole  
Carl H. Coleman  
Leslie and Sam Coleman  
John Colla-Negri

Peter and Constance Comer  
Ms. Jill Conner  
Adam Conner-Sax  
David Coogan  
John E. and Lenore C. Cooney  
Paula J. Cooper  
Ms. Ranny W. Cooper and Mr. David A. Smith  
Richard B. Cooper  
Caroline and Michael Corbin  
The Jennifer Corzine Foundation  
Kenneth J. Cotty  
Mrs. Daniel Cowin  
Ron Creamer  
Miranda Cresswell  
Mr. Jeffrey J. Cronin  
Mr. and Mrs. Carl B. Cronk  
Mr. and Mrs. Dennis Cross  
Angela and William Cruger  
Mr. Paul E. Cugno and Ms. Lina Diblasio  
Susan Cullen  
Ellie and Edgar Cullman  
Aftab Cumber  
Ms. Jennifer Cummings  
Ms. Anne Nickel Curtin  
Francis X. Cusack  
Philip Cusick  
Mark and Joyce Czaja  
Katherine and David Czehut  
Lawrence and Susan Daniels  
Margaret A. Darrin Foundation  
Marie Daverio  
Richard A. Davies and Gayle K. Haller  
Richard Davis  
Beth De Guzman and Jeffrey Lawson  
Ann and Alfredo Defnnocentis  
Valerie Delacorte Fund  
Jessica K. Delbaum  
DeLisi Family Foundation  
Manfred Demenus  
Mr. William Derella  
Phylis DeRose  
Robert J. and Lindley G. Devereux  
Kristen Dickey  
Julie Anne Dilley  
Donald and Maureen Dillon  
Laura and Stephen DiMichael  
Joseph M. and Lisa DiSalvo  
Michael Distenfeld  
Michael J. Dixon  
Martha Doggett  
Teresa Donahue  
Paul M. Donofrio and Ellen L. Reddy  
John Doody  
Patrick B. Dorsey  
Ms. Catherine J. Douglass  
William and Linda Dowling  
Rodman and Jacqueline Drake  
Peter I. Drummond  
Ms. Jill Dulber  
Janice Dutcher  
Javier and Heather Dyer  
Thomas E. Dyja and Suzanne Gluck  
Robert R. Dyk

Christopher W. Dysard and Catherine Suvari  
Brenda Earl  
Mary B. Early  
Mr. Joshua Easterly  
Barbara Lee Ebs  
Richard and Trudy Edelman  
Mrs. Elizabeth M. Ehrenfeld  
John W. Ehrhardt  
Thomas L. Eisenberg  
Evbayowieru Anastasia Ekue  
Betty W. Ellerin  
Donald H. Elliott  
Barbara and Joseph Ellis  
Susie and Tony Ellis  
James N. and Gail D. Ellowitz  
ELSAM Fund  
Ruth and Jerry Elsner  
David and Elizabeth Emero  
Ms. Elsa Eng  
Charles and Elaine Engelstein  
Joe and Elizabeth Engle  
Jane Engquist  
Phyllis J. Enright  
Peter Entin and Barbara A. Janowitz  
Alan M. Epstein and Arden S. Epstein  
Elissa and Herbert Epstein  
Mr. Scott Epstein  
Fritz E. Erismann  
Philip A. Ernst  
Steven and Kimberlee Espinosa  
Mrs. John W. Espy  
Catherine E. Eulau  
Sheldon Evans and Martha McMaster  
F.A.O. Schwarz Family Foundation  
Ann M. Falvey  
Mrs. J. P. Fanjul  
Ms. Sharon M. Fantera  
Joanne Farkas  
Robert C. Faulkner  
Kelly and Michael Fedak  
The Larry Feinberg Family Foundation  
Ms. Gena Feist  
Mr. Leo Feist  
Daniel J. Feld and Ann E. Berman  
Diana Feldman  
Judith P. Feldman  
Lloyd and Susan Feller  
Peter Ferdinand  
Dr. and Mrs. David H. Fields  
Randal and Allison Fippingger  
Daniel J. Fish  
Renée Fishman  
Michael Flaks and Susan Mandel  
Mara Flanagan  
Eva Flores  
Ms. Anne Ford  
Ms. Charlotte M. Ford  
Mary Beth Forshaw  
Larry and Barbara Fox  
Ariel Foxman  
The Thomas W. & Claire W. Frank Fund  
Mark and Amy Frank

David W. Frankel  
Keith Franklin  
Mr. and Mrs. Burton M. Freeman  
Amandine Freidheim  
Ms. Elise D. Frick  
Barbara Friedberg  
Lois Friedman  
Mr. and Mrs. Robert A. Friedman  
Stephen H. Frishauf  
Kevin W. Frisz  
Reverend Robert J. Frueh  
Mr. Yen Fung  
Henry and Linda Funsch  
Linda Furman  
Mr. Thomas Fusco  
Nicole Gagnon and Marco Caffuzzi  
Jo and Madison Galbraith  
Galison/Mudpuppy  
Gisela and David Gamper  
Mr. Ira J. Gardner  
Benjamin and Rachel Geballe Fund  
Mr. Nicholas R. Gelber  
Andrew and Caroline Gelman  
Sally George  
Vincent and Lorraine Gesualdi  
Haleh Amiri Ghaemmaghami  
Jane L. Gilbert  
David and Shirley Ginzberg  
Theresa Giunta  
The Glickenhau Foundation  
Mark Goldberg  
Michael E. Goldberg, M.D.  
Judith and David Goldfinger  
Justin Goldman  
Caryl Goldsmith  
Nicholas Gole  
Bennet W. and Cynthia R. Golub  
Gary and Nancy Goodenough  
Gordon Family Charitable Foundation  
Michael and Sally Gordon  
Mr. Jeffrey B. Gotlinger  
Mr. James Grady  
David Gray  
Donnell Green  
Ted Green  
Theodore Green and Debra Beneck  
Mr. Daniel Greenberg  
Glenda Greenwald  
Peter N. Greenwald and Nancy Hoffman  
Kenneth A. Griffin  
Marey Griffith  
Lucy Bondi Grollman  
Charles H. Gross and Joan D. Gross  
Stanley Grossman  
Mr. John Gruber  
Anne Gumowitz  
Agnes Gund  
The JCT Foundation  
Ms. Sally Jenkins  
Mr. Steven Jeraci  
Chandra Jessee and Julius Gaudio  
Ann and Tom Johnson  
Douglas E. Johnson  
Barbara and Donald Jonas Family Fund  
Reagan Jones

Russell S. Halley  
Elly and Steve Hammerman  
John M. Hanrahan  
Mr. and Mrs. Michael Hanson  
Andrei Harasymiak  
Gina Harman  
Mr. Mark E. Harris  
Nancy L. Harris  
Stephanie R. Hart  
Preston Haskell  
Mr. Patrick L. Hayden  
Gretta Heaney  
Adam Heine  
Jean Heins  
Shai A. Held  
Joseph Henchey  
Herrick Foundation  
Jayme Herschkopf  
Marlene Hess  
Ms. Constance A. Heymann and Mr. John D. Muller  
Ms. Angela Heyob  
Weston and Ann Hicks  
Henry W. Higbie and Georgia Changaris Higbie  
Tania Higgins  
The Highland-Mills Foundation  
Judith Hiltz  
Eric and Barbara Hippeau Foundation  
Elizabeth Hirsch  
Mr. Thomas Hoepker and Ms. Christine Kruchen  
Jonathan and Judy Hoff  
The Hoffman Family Foundation  
Barbara Hoffman  
Bruno Hofmann  
Mr. and Mrs. Adam D. Hollander  
Babette Hollister  
Katharine Homans and Patterson Sims  
Miriam Horn and Charles Sabel  
Stephen R. and Katherine D. Howe  
Trisha Howell and Jason Gross  
Andrew Hruska and Rebecca Todd  
Daniel K. Hsiung  
Mr. Geoffrey Hsu  
Mrs. Rachel D. Huemer  
The Andrew Hughes Chatham Foundation  
Kent Huie  
Steven and Miriam Hyman  
Sasha and John Hynes  
Bill and Cathy Ingram  
Sing Wu Inman  
Jack Intrator and Debrah Welling  
Sara Isaly  
Julie S. Jacobs  
Deepak Jain  
The JCT Foundation  
Ms. Sally Jenkins  
Mr. Steven Jeraci  
Chandra Jessee and Julius Gaudio  
Ann and Tom Johnson  
Douglas E. Johnson  
Barbara and Donald Jonas Family Fund  
Reagan Jones

Ms. Cynthia L. Joyce  
Frances Kambitsis  
Stephen Kamsler  
Mr. Douglas H. Kanarek  
The Kandell Fund  
Stephanie Kane  
Steve and Michelle Kanner  
John Kantakis  
Ms. Cathy M. Kaplan  
Zachary Karabell and Nicole Alger  
Mark and Sharon Kashen  
Mr. Eric N. Kaston and Mrs. Isabel Kaston  
Marcy and Aaron Katersky  
The Rosalie Katz Family Foundation, Inc.  
Jacqueline Katzel  
Ms. Judith F. Kaufer  
Mr. and Mrs. John A. Kauffmann  
George and Mariana Kaufman  
Greg Kaufman  
Susan and Ronald Kaufmann  
Barry Kaye  
Benjamin Keith  
Virginia L. Keith  
Amy and Brian Kelley  
Mr. John Kelly  
Karen A. and Kevin W. Kennedy Foundation  
David and Sharyn Kerschner  
Bertram and Gloria Kessler  
Alex Kim  
Brenda Kim  
Cynthia and Anthony Y. Kim  
Jae Kim  
Jennifer and Tim Kingston  
John Kirby and Susan Cullman  
Daniel Kirk Foster  
Kirszner Family Fund  
Marjorie Klayman  
Margaret Klein  
Alan and Kathryn Klingenstein  
Joele Frank and Laurence Klurfeld  
Natalie Koffman  
Paul Kolaj  
James Koo  
Joel and Kate Kopp  
The Toby and Paul Koren Charitable Fund  
Tom Kostro and Patricia Brody  
Ms. Kristina P. Koutrakos  
Mr. Phil Koutsis, Jr.  
Suzie and Bruce Kovner  
Robert M. Kowit  
Joyce L. Kramer Philanthropic Fund  
Barbara Kravitz  
Ruth F. Kreiger  
Darleen Krimetz  
Bernard and Wendie Kroll  
Stephen J. Krooth  
Rob Krulak  
Christopher B. Kruse  
Sara Kubek  
Louise E. Kuebler  
Mr. Dale S. Kugel  
Jerome Kurtz

Robert E. and Elizabeth A. La Blanc Foundation  
Ms. Sheila C. Labrecque  
Liam Lacey  
Catherine and Larry Lafee  
Lafferty Family Charitable Foundation  
Sidney and Esther Laifer Family Foundation  
Lambert Family Foundation  
Julia and Henry Landau  
Ilene Landress  
Mr. and Mrs. Pierre F. Lapeyre, Jr.  
Amy R. Laskey  
The Leonard and Evelyn Lauder Foundation  
Ms. Anna M. Laudon  
Mr. Eric A. Lawrence  
Rebecca A. Lawson and Michael C. Gaertner  
Russel and Christine Lay  
Donald H. Layton and Sandra L. Lazo  
William LeBlanc  
Roger Lehecka and Ria M. Coyne  
David Leiwant and Aurora DeGasperi  
Lana Lenar  
Barry B. Lepatner  
Mr. David Lerner  
David and Abby Levinson  
Gabriel and Judith Levitt  
Joslyn Levy and David J. Spector  
Melvyn and Janet Lewinter Charitable Fund  
Clea Lewis and Peter Ackerman  
Ms. Isabel M. Lewis  
The Lichtenstein Foundation  
Judith Lidsky  
Lowell and Betsy Lifschultz  
Kamie Lightburn  
Brad Lindenbaum  
Steve and Amy Lipin  
Matthew Lippert  
Evelyn and Mark Lipton  
William F. Lloyd  
Ms. Katharina B. Lockhart  
Lauren London  
Loose Family Charitable Fund  
Matthew Low  
Mr. Ryan Lowry  
Susan Lukesh  
Diana Lum  
Robert and Fadya Lurie  
Mr. and Mrs. Mark Lux  
Joanne Lyman  
William T. Lyman  
Mr. Peter J. MacDonald  
Mr. Fredric Mack  
Jeanne P. Macrae  
David Magier  
Gigi Mahon  
The Malkin Fund, Inc.  
Joel and Kayla Mandelbaum  
Judith D. Mandrakos  
Dr. Carl S. Mankowitz and Ms. Lisa E. Rubin  
The Grace R. & Alan D. Marcus Foundation

Lawrence F. Marcus  
Leonard and Randi Marcus  
Susan J. Margolin and Neal I. Smith  
Peter N. Marron  
Mr. Ralph Marron  
Alexander G. Marshall  
Gerald and Barbara Marwell  
Dr. Prakash Masand  
Mason Family Fund  
Ms. Margaret Mastrianni  
Priscilla and George Matouk  
Ms. Jenny Matthau  
The Mauriel Family Foundation  
Christopher May  
Vanessa May  
Musa and Tom R. Mayer  
Peter J. Mayer  
Ignacio A. Maza  
Robert Mazur  
Rosemary Mazzo  
Holly McAllister  
Ian and Jennifer McAllister-Nevins  
Kevin McCafferty  
Robert and Michelle McCarthy  
Robert McCollum  
Mr. Michael H. McComiskey and Ms. Julia McEvoy-McComiskey  
Peggy Ann McGarry  
Michael McGibbon  
Suzanne McGovern  
George Percy McGown  
The Joseph and Christine McGrath Charitable Fund  
Robert McQuin  
Joseph and Elisabeth McLaughlin  
Ms. Rhonda McLean  
Mr. Terrence M. McLean  
Brian McManus  
D J McManus Foundation Inc.  
David and Jo Meer  
Mimi and Elliott Meisel, Brill & Meisel  
Harriet R. Meiss  
Mr. Alan Melniker  
Craig Mende  
The Meredith Family Foundation  
Jonathan Merkin  
Matthew V. Merola  
Ember R. Merrell  
Monica and Charles Merrill  
Richard and Jane Mescon  
Nicola Meskin  
Ms. Anita Meyer  
Craig Meyers  
Ms. Melanie E. Meyers  
Ms. Felice Michetti  
Dr. Myriam Miedzian  
Eliza M. Migdal  
Michael V. Mignone and Teena Ann V. Sankoorikal  
Milko Milkov  
John A. Miller  
Jonathan and Phyllis Miller  
Mr. John Minio  
Charles B. Mintzer  
Tara Mirchandani

Dr. Neal Mittman and Dr. Candace C. Martin  
Ronald Mizrahi  
Robert Moderelli  
John and Marilyn Moller  
Deborah L. Moody, M.D.  
Ty Montague  
Charles C. Moran  
The Garrett and Mary Moran Family Foundation  
Mr. John Moran  
Sarah Moreau  
Gretchen C. Morgenson  
John C. and Katherine M. Morris Foundation  
Michael Morrisey  
Morrison Family Foundation  
John and Evelyn Morrison  
Margaret Morrison and Larry Heuer  
Susan L. Morrison  
Marcia J. Mosimann  
Mr. Scott Mowbray  
Timothy T. and Leslie A. Muldoon  
Irene Mungiu and Donald Koosis  
Duncan Murdoch and Wai Ling Chan  
Cynthia and Donald Murphy  
Timothy and Ruth Murphy  
Jack Myers  
Mr. David Nadelman  
Julia F. Nakayama  
Ms. Catherine R. Nathan  
Philip Neil and Nancy F. Humphreys  
Nelco Foundation  
Scott Neslund and Todd Barnhart  
Richard P. and Faye Nespola Charitable Foundation  
Mr. and Mrs. Thomas L. Newberry  
The Carol and Melvin Newman Family Foundation  
Mohammad Niazi-Sai  
Gayletha Nichols  
Joyce Nissim  
Anthony R. and Debra S. Nole  
William Novamisle  
Harold and Isabelle Oaklander  
Mr. Scott D. Oaks  
Penn Oberlander Family Foundation  
Dr. Lara Oboler  
Robert and Patricia O'Brien  
Mr. John J. O'Connor  
Mr. Thomas J. O'Donnell  
Alex Okun and Mary McCord Jtwros  
Ms. Anna C. Oliver  
Lisa Orberg  
Kimberly and Brian Orcutt  
Stephen Oremus  
Joel Osness  
Rose Ostrovsky  
Mr. Edward Otte  
Howard and Marcia Owens  
The Frank Pace, Jr. Foundation Inc.  
Patricia Pacelli and Eric Wepsic  
Mr. George H. Packer and Mrs. Laura J. Secor  
O. Stephen Paganuzzi, Jr.  
Geraldine Paige

Valerie and Jeffrey Paley  
 Mr. Michael Paliotta  
 Gwyneth Paltrow  
 Nicholas and Pauline Papain  
 Cynthia Paret  
 Molly W. and David J. Park  
 Donald Parker  
 Katharine H. Parker  
 Roger N. Parker  
 Mike Parr  
 Jigar Patel  
 Mr. Clyde P. Patton  
 Liz and Jeffrey Peek  
 Carla M. Pehowski  
 Noelle and Mark Penna  
 Julie and Josh Penzner  
 Mr. Randall Perham  
 Mark and Diane Perlin  
 Thomas Perrotta and Rachel Kane  
 Mrs. Sandra S. Pershing  
 Marie Petach  
 Ms. Margery Peters  
 Mr. and Mrs. Richard and  
 Caroline Petersen  
 Catherine C. Petras  
 Steven Petrie and Ellen Hexter  
 Philanthropic Fund  
 Linda and Thomas Petrone  
 Greer L. Phillips and Alice H.  
 Phillips  
 Sharon Pietrzak  
 Linda C. Pilaro  
 Pilkington Family Fund  
 Ms. Leslie Pintchik  
 Ms. Sara F. Plath  
 Nicholas and Sheila Platt  
 Ann C. Poll  
 Terri Pollak  
 D. Justin Pollock  
 Stefanie Pont  
 Mr. Ben Posel  
 Jerome and Gerta Posner  
 The Posner-Wallace Foundation  
 Leonard Post and Susan Hauptman  
 Ms. Claire Insalata Poulos  
 Phil Press, Media Options Inc.  
 Mr. Steven S. Pretsfelder and  
 Ms. Barbara D. Gochberg  
 Provincial Foundation  
 David E. and Nancy M. Provost  
 William R. Pullano  
 Mr. and Mrs. Gene V. Pullo  
 Mr. Chris Puma  
 Ms. Ann E. Purinton  
 Ms. Beverly Puris  
 Lisa Quattrocchi  
 Francois Quintard-Morenas  
 Denise G. and Jonathan D.  
 Rabinowitz  
 Marc and Elizabeth Rabinowitz  
 Joan G. Rall  
 Mr. Jerome Ranawake  
 Sal and Lorraine Randazzo  
 Mr. and Mrs. Don M. Randel  
 Michael C. Ranson  
 Gerald H. and Barbara K. Ranzal  
 Matthew H. Rauch

Angela M. Reed  
 Alex Reid and Gretchen Schaffner  
 John Reilly, Jr.  
 Daniel and Paula Reingold  
 2004 Charitable Annuity Trust  
 Ellen and Steven Reisberg  
 Ernest and Jeanne Reock  
 Clayton S. Reynolds  
 Edward J. Reynolds IV and  
 Miranda L. Reynolds  
 Doreen Richards-Reid  
 Ms. Stacey Ricketts  
 Susan Riegelmann  
 Adam Ring Philanthropic Fund  
 Peter F. Risafi  
 Ann J. Roberts  
 Linda Roberts  
 Mr. and Mrs. Phil Robin  
 Marla and Neil Rock  
 Beth Rocke  
 The Roka Gift Fund  
 Roman and Joan Rome  
 Phyllis Rose and  
 Laurent De Brunhoff  
 Barbara Rosen  
 Gail and Daniel Rosen  
 Gerald Rosen  
 Joseph Rosen Foundation  
 Susan and Gary Rosenbach  
 Kim and Ralph Rosenberg  
 Sam Rosenberg  
 Marc Rosenwasser  
 Laura Ross  
 Nancy and Paul Ross  
 Foundation, Inc.  
 Ronald M. Rothschild  
 Amy Rubenstein  
 Mr. Howard Rubin  
 Neil Rubler  
 George and Tanya Ruff  
 Mr. and Mrs. Matthew J. Runkle  
 Albert V. Russo  
 Mary K. Rutherford  
 Matt Sabatine  
 Nancy J. and Bradley K. Sabel  
 Bonnie Sacerdote  
 Mr. Jonathan S. Sack  
 Lisabeth Sagahara  
 Aaron Saiger and Lisa M. Gordis  
 Bernard Salanie  
 Mr. Irving Salem  
 Sandler Family Fund  
 Mr. James R. Sandner  
 Norman and Doris Sandys  
 Paul and Jane Savelleas  
 Randall K. Say  
 Mr. Timothy Scanlon  
 Nicholas J. Schaden  
 Bruce R. Schaffer  
 Robert and Mae Scheff Fund  
 Catherine Schepis  
 Martin and Judith Scherzer  
 Mr. and Mrs. David T. Schiff  
 Schlesinger Family  
 Philanthropic Fund  
 Dr. Herbert J. Schlesinger and  
 Dr. Ann H. Applebaum  
 Marc Schliesman

Frank Schneider  
 Jeffrey and Cari Schnipper  
 WP Schoonveld  
 Burwell Schorr  
 Judah and Gail Levey Schorr  
 David Schrader  
 Alissa and Michael Schrieber  
 Allison and Benjamin Schulte  
 Ms. Dominique Schulte  
 Mr. Oliver Schupp  
 Mr. Roy Schwalbach  
 James H. Schwartz  
 Laurie and Owen Schwartz  
 Nancy S. Schwartz  
 Robert K. Scripps Family Foundation  
 Carlton and Lucille Sedgeley  
 Jean and Charles Segal Foundation  
 The Helena Segy Foundation  
 Mr. Richard Serra  
 Gary Sevitsky  
 Steven C. and Amy Shachat  
 Mary and Jeffrey Shafer  
 Jean and Martin Shafiroff  
 Lisa Shalom  
 Maurice Shamah  
 Noah D. Shannon  
 Shapiro Family Foundation  
 Adam J. Shapiro  
 Ellen Shapiro  
 Mr. Myles Share  
 Brigid Sheehan  
 David and Elizabeth Sherman  
 Abraham I. and Jean Sherr  
 Foundation  
 Ms. Patricia E. Shevlin  
 Ari and Adina Shrage  
 Matthew A. Shucker  
 Herb and Jeanne Siegel  
 Liliana and Lee Siegelson  
 Josh Silva  
 Mr. Ralph James Silva, Jr.  
 Rajesh Singh  
 Michael Slavens  
 Dave Sloan  
 Jonathan A. and Cornelia Small  
 Alan and Joyce Smith  
 Gregg Smith  
 Ms. Lisa Smith  
 Elaine Smithline  
 Suzanne Smitonick  
 Michael and Carol Snyder  
 Michael and Chhaya Sobotka  
 George Y. Sodowick  
 Jeffrey Shepard Sohm  
 Jennifer Sohn  
 Ms. Kathleen Sosa  
 Kathy Spahn and Richard Sandhaus  
 Mark E. Spatt  
 Barbara J. Squeri  
 Pamela Stafford  
 Carl Stanton  
 Robert Stanton and Susan Melden  
 Cheryl and Brian Starer  
 The Fred Stein Family Foundation  
 Peter Stein  
 Allison and Leonard Stern

Yuka & Robert Stern  
 Stocks Family Fund  
 Cynthia and Theodore Story  
 Bonnie and Tom Strauss  
 Chris Striedter  
 Dr. Gary E. Striker, M.D.  
 Strong-Cuevas Foundation Inc.  
 Stacie Styles and W. Ken McCracken  
 Philip Sugar  
 Eleanor and John Sullivan  
 Mr. Shawn Sullivan  
 Dr. P.R. Sundaresan  
 Maryann Sung  
 The Flora and William Surnamer  
 Foundation  
 Robert Swanton  
 Richard Sweren  
 Jeffrey C. Swiatek  
 William and Jeanne Sylvia  
 Marc C. Symons  
 Mr. and Mrs. Christopher K. Tahbaz  
 David Tane  
 Nathan Tannenbaum  
 Foundation, Inc.  
 Joseph and Anne Taranto  
 Carol Teamer  
 Mr. and Mrs. William R. Techar  
 Mr. Mark Tecotzky and  
 Ms. Nina Jaroslaw  
 Craig and Nancy Tenney  
 Ms. Colette N. Thaw  
 Mr. and Mrs. William S.  
 Thoman-Sterns III  
 Allison Thrush and Arthur Chang  
 Tiger Baron Foundation, Inc.  
 Michael Tiger  
 Natalie Tiranno  
 Steven C. and Karol W. Todrys  
 Raj Tolaram  
 Mr. and Mrs. Howard Tooter  
 Mr. and Mrs. Lawrence Trainor  
 Peter and Laura Treadway  
 Cheryl J. Trench  
 Phyllis Triple  
 Kathleen H. Tripp  
 Jason Truman  
 Ellen and William Turchyn  
 Amanda Van Doorene  
 Mr. and Mrs. Philip Van Orman  
 Diane G. Van Wyck  
 Cynthia and Lee Vance  
 Bill Vanderson  
 Linda Varoli  
 Ms. Marcy Verdi  
 Sarah Varet  
 Richard Verner and Jean Hellingering  
 Nomi Victor  
 Stephen R. and Diane K. Volk  
 Paul and Ellen Wachtel  
 Bryan Wagner  
 Mr. Steven Waldman  
 Miriam-Simma Walfish  
 Ms. Linda Walker  
 Mark Walker  
 Helena Walkowiak  
 Mr. and Mrs. Joseph Walkush  
 Lew H. Walter

Leonard M. Wasserman  
 Michael and Gayle Wasserman  
 Margaret Waters  
 Mrs. Hilary H. Watson  
 Dr. James D. Watson and  
 Mrs. Elizabeth Watson  
 Mr. Frederick J. Watts  
 Mr. Harold Watts  
 Amy Weber and Sheldon Goldfarb  
 Fritz T. and Henriette Wegmann  
 Jonathan D. and Deborah H. Weiner  
 Ms. Linda B. Weingarten  
 Brian K. Weinstein  
 Robert M. Weintraub  
 Lisa D. Weiss  
 Jeffrey and Nina Weissman  
 Max and Eva Weissman  
 William F. Weld  
 Karen Wells  
 Susan Wells  
 Fritz Wenzler  
 Ms. Elizabeth Werter and  
 Mr. Henry  
 Carolyn Westhoff  
 Weston Foundation  
 Nicole Weymouth  
 Ted and Betsy Wheeler  
 Ms. Catherine Whitney  
 Brett F. Whysel  
 Dr. O. Paul Wielan  
 Deborah E. Wiely  
 Wien Family Fund  
 Josephine C. Wilkinson  
 Charitable Lead Trust  
 Allan and Beth Williams  
 A. Jason Windawi  
 Lois and Mark R. Wingerson  
 The Winky Foundation  
 Fran S. Winter  
 Ms. Lucy S. Winton  
 Herbert H. Wise  
 Wishcamper Family Fund  
 Mr. Neil Witriol  
 John and Beth Wittenberg  
 Joanne Witty and Eugene Keilin  
 Fund  
 Melissa Wohlgemuth  
 Randi Wolf  
 Joseph Wolnick  
 Mr. and Mrs. Howard Y. Wong  
 Mitchell Wood  
 John and Samantha Woodruff  
 Mr. James Worth  
 Lindsay M. Wright  
 Wyman Family Foundation, Inc.  
 Yako and Judith Yafet  
 John Yoshida  
 John C. and Linda Young  
 John Zacherle  
 Marissa and David Zackowitz  
 Jeff Zalaznick  
 Mr. David Ziegler  
 Joseph G. Zihal  
 Mr. George Zilveti  
 Ms. Amelia J. Zoler  
 David M. and Martha Zornow  
 Dana Zukofsky  
 Ms. Marianne K. Zychal

## GREEN FLEET FUND

These supporters have generously provided the funding to make City Harvest's vision of a green truck fleet a reality.

### \$250,000+

Harry and Misook Doolittle  
 Foundation  
 Elizabeth and Clement Moore  
 The Steven and Heather Mnuchin  
 Foundation

### \$100,000-\$249,999

Booth Ferris Foundation  
 Joy Ingham  
 Alison and Jim Kallman  
 Bill and Jessica Koenigsberg

### \$50,000-\$99,999

Carol Atkinson  
 Alex and Jacqueline Berenson  
 Richard S. Berry and  
 Lucy A. Commoner  
 Jeanne Donovan Fisher  
 Kerrie D. MacPherson and  
 David A. Gatchell  
 Kris and Marc Granetz  
 Sharon H. Jacquet  
 Mrs. Topsy Taylor  
 Wachovia Wells Fargo Foundation  
 Jill and Jeffrey Weiss  
 Michael A. Young

### \$25,000-\$49,999

Margaret and Randy Brown  
 Daniel and Patricia Bumgardner  
 Dana B. Cowin  
 Zvi Eiref  
 Levin Goffe Family Foundation  
 Chris and Tom Guba  
 Abram and Ray Kaplan Foundation  
 Grace Koo and Kerry Heffernan  
 John Paulson  
 Sandra and Eric Ripert  
 May and Samuel Rudin Family  
 Foundation, Inc.  
 Richard J. Smilow  
 Katherine Workman and  
 Gary Freilich  
 Yum-O!

### \$10,000-\$24,999

Marjorie and Steven Adams  
 Melissa A. Berman and  
 Richard Klotz  
 Matthew C. Bryant  
 The GE Foundation  
 Goldman Sachs Matching Gift  
 Carol Pledger  
 Jilly Stephens  
 Clifton and Gina Strain

### \$5,000-\$9,999

Mr. Arthur F. Backal  
 Herb Karlitz  
 Nicholas V. Mautone, Jr.  
 Zubin Taraporevala  
 Natalia Zaldivar-Bonzon

### \$1,000-\$4,999

Alan Katz  
 Pamela and Andrew Kaufmann  
 Mellam Family Foundation  
 M. Thorne L. Shakkour  
 Emily H. Susskind  
 Joana Vicente and Jason Kliot

## FUTURE HARVEST

These individuals have included City Harvest in their estate planning, leaving a legacy of support that will help us continue the fight against hunger in New York City in coming years.

Mr. David S. Barr  
 Ms. Helen Bartoshuk  
 Henry and Lottie Burger  
 Mr. Robert L. Cahill, Jr.  
 Ms. Alexandra Damien  
 Robert and Rita Delia  
 Diana Douglas  
 Neil S. Fox  
 Ms. Eleanor L. Fulcher  
 Gerard Gravallesse and J.P. Gendron  
 Lucy Bondi Grollman  
 Ms. Kristine Haag  
 Ms. Joanna Cochrane Harris  
 Joy Ingham  
 Sharon H. Jacquet  
 Mr. John T. Klammer  
 Mrs. Marlise C. Konort  
 Jerry and Sondra Kuskin  
 Jeanette Loeb  
 Lone Pine Foundation, Inc.  
 Mrs. Betty Marks  
 Sue and Gregory Marks  
 Mr. Goichi Matsumoto  
 Patrick and Cindy McLaughlin  
 Constantin and Gabriella Melinte  
 Ms. Regina M. Motreuil  
 Dr. Martin A. Nash  
 Ms. Charlotte Peisner  
 Ms. Mary Bender Poelzlbauer  
 Lawrence and Lisa Risi  
 Mrs. Amy Baker Sandback  
 Peter Schmidt, Esq.  
 David and Toni Schoen  
 The Helena Segy Foundation  
 Ms. Carole Shelley  
 Mr. Paul Sommerlund  
 Ms. Rebecca A. Sparks, R.D.

June C. Starck  
 Mr. Morton S. Stern  
 Mrs. Topsy Taylor  
 John and Kathryn Townsend  
 Joan and Oliver Twigg  
 Mrs. Elisabeth K. Wachtel  
 Stephen and Laura A. Winningham  
 Worthington Mayo-Smith Fund

## FOOD DONORS

Last year City Harvest provided nearly 29 million pounds of food for hungry New Yorkers thanks to thousands of generous food donors including those listed below.

### BAKERIES

15th Avenue Food Corp.  
 Aladdin Bakery  
 All Natural Products  
 Amy's Bread  
 Bagel Express  
 Bakery of New York  
 Bergen Bagels  
 Eli's Bread  
 Glendale Bagels  
 Grandaisy Bakery  
 H & H Bagels  
 Murray's Bagels  
 New Yorker Wholesale Bagels  
 Original Bagel  
 P&C Bagels  
 Pain D'Avignon  
 Rollo Mio  
 Royal Crown Pastry Shop  
 Sullivan Street Bakery  
 Tom Cat Bakery  
 Tribeca Oven  
 Vieira's Bakery, Inc.

### CATERERS

Aramark  
 Between the Bread  
 Centerplate  
 Culinar, Inc.  
 Flik international  
 Gourmet On J  
 Great Performances  
 JCC  
 Lackmann Food Service  
 Levy Restaurants  
 Meal Mart  
 Otarian  
 RCano Events  
 Restaurant Associates  
 Robbins Wolfe Eventeurs  
 Sodexo  
 Something New Catering

Union Square Events formerly known as Hudson Yards  
World's Fair Marina Restaurant & Banquet

### COFFEE BARS

Bagels By Bell  
Beaner Bar  
Ciao For Now  
Gregory's Coffee  
Joe the Art of Coffee  
Naidre's Park Slope  
Seattle's Best Coffee  
Shock Coffee, LLC  
Starbucks Coffee  
Stumptown  
Verb

### CORPORATE

AIG  
Amalgamated Bank of New York  
Barclays Capital - Restaurant Associates  
Citibank  
Delta Shuttle  
Dole Packaged Foods  
Fancy Food Show  
FreshPoint Connecticut LLC  
International Restaurant and Foodservice Show of New York  
JPMorgan Chase & Co.  
Kaye Scholer LLP  
Kosherfest  
Mutual of America  
New York City Produce Show & Conference  
Silverstein Properties, Inc.  
Sullivan & Cromwell - Sodexo  
The Fresh Diet  
Weight Watchers

### FARMS

B & B Farms  
Dagele Brothers Produce  
Emmi & Sons  
Five Acre Farm  
GrowNYC Greenmarkets  
Hoeffner Farms  
J. Glebocki Farms  
Lenny Bruno Farms  
Lichwick Farms  
Minkus Farms  
Park Slope CSA  
Pawelski Farms  
Pioneer Growers Cooperative  
R & G Produce  
R & M Andrews & Son Farm  
Richard Pawelski  
Rortkamp Brothers Farm  
Sidoti Farms  
Torrey Farms  
Yurchuk Farms

### HOTELS

Crowne Plaza Manhattan  
Hilton  
Hilton New York & Tower  
Hotel Gansevoort  
Intercontinental  
New York Times Square  
Intercontinental  
New York Barclay  
Millennium Broadway  
New York Marriott East Side  
The Plaza  
Loew's Regency  
Roosevelt  
Sheraton New York Hotel and Towers  
St. Regis  
The Four Seasons New York  
The New York Helmsley  
The New York Palace  
The New Yorker  
The Peninsula New York  
The Pierre  
The Westport

### MANUFACTURERS

Beech-Nut Nutrition Corporation  
Blount Fine Foods  
Boar's Head Brand  
Cabot Creamery Cooperative  
Cargill  
Coca-Cola  
Cott Beverages  
Dannon Co. Inc.  
General Mills Yoplait Columbo  
Goya Foods  
GNU Foods  
Granny Kitchen LLC  
Julian's Recipe  
Just Bagels Mfg, Inc.  
Kozy Shack  
Kraft Foods Global, Inc.  
Nestle  
Terra Chips  
Tribe Mediterranean Foods  
Tropicana  
Veira's Bakery, Inc.

### NON-PROFIT

Alliance For Lupus Research  
ASPCA  
Bnai Raphael Cheshed Organization  
Canstruction  
Cub Scouts  
Girl Scouts  
JCC in Manhattan  
Culinary Arts Center  
Jewish Theological Seminary  
Marc Lustgarten Foundation  
Met Council Food Pantry  
National MS Society NY Chapter  
New York Blood Center  
NYC Marathon New York  
Road Runners Club  
Our Lady of Hope  
Robin Hood  
St. Demetrios Church  
Yeshiva Ohel Moshe

### PRODUCTION COMPANIES

60 Studio  
Alison Attenborough  
Beth Galton  
BioLumina  
CBS Corporation  
Columbia Pictures  
Chelsea Pictures  
Civic Entertainment Group  
Curious Pictures  
Epic Marketing & Events  
Food Network  
Highline Stages  
Hill Holliday  
InTheMixx Radio  
Mark Ferri Studio  
MTV Network  
NASFT  
Rezny Studio  
The Rachael Ray Show  
The Today Show

### QUICK SERVE RESTAURANTS

7-Eleven  
Au Bon Pain  
Ballfields Cafe  
Cafe Duke  
Chipotle Mexican Grill  
Everything Bagels Cafe  
Golden Krust  
Hale & Hearty Soups  
KFC  
Le Pain Quotidien  
Mama's Food Shop  
Marche Madison  
Panera Bread  
Pizza & Pita  
Pret A Manger  
Strictly Roots  
Sunberry's Cafe  
Vic's Bagel Bar

### RESTAURANTS

Alto Restaurant  
Asia De Cuba  
Bagel Express  
Cafe Casano  
China Grill Management  
Colicchio & Sons Restaurant  
Cucina & Company  
Dishes  
E & C Jamaican Place  
E.A.T.  
Il Forno  
Le Bernardin  
Mama's Backyard Cafe/  
Leo's Latticini Deli  
Olive Garden  
Per Se  
Red Lobster  
The Capital Grille  
The Corner Cafe & Bakery  
Virgil's Real Barbecue

### SCHOOLS

Academy of American Studies  
Barnard College  
Books and Rattles Preschool  
Bronx School for Law, Government and Justice  
Columbia University  
Edward R. Murrow High School  
French Culinary Institute  
IS 34 - Totten Intermediate School  
IS 126 - Queens  
IS 141 - Queens  
James Madison High School  
MS 180 - Bronx  
Poly Prep Country Day School  
PS 14 - Queens  
PS 160 - Brooklyn  
PS 41 - Manhattan  
PS/IS 49 - Queens  
Ramaz Upper School  
The Institute of Culinary Education  
United Nations International School

### SUPERMARKETS

Agata & Valentina  
BJ's Wholesale  
Costco  
D'Agostino Supermarkets Inc.  
Dean & DeLuca  
Eataly  
Fairway  
Food Emporium  
FreshDirect  
Gourmet Garage  
Gristedes  
Key Food  
King Kullen  
Morton Williams Supermarket  
Park Slope Food Coop  
Tastebud's Natural Foods  
Trader Joe's  
Union Market  
Whole Foods Market  
Zabar's

### RETAIL

Avon Products  
Away We Go Postal  
Banana Republic  
Barney's New York  
Bed Bath and Beyond  
Buffalo Exchange  
Burberry Store  
Cartier  
City View Pharmacy  
Club Commercial Mexicano  
Crate & Barrel  
Duane Reade  
Keller Williams  
Makeup Forever  
Modell's  
NOS Boutique  
Renny & Reed - Flowers Shop  
The Disney Store

### WHOLESALE

Associated Produce  
Baldor Specialty Foods  
Banacol Marketing Corporation  
Banana Distributors of NY  
Circus Fruits Wholesale Corp.  
Dairyland/The Chef's Warehouse  
Eli & Ali's Love Tomatoes  
Fruit Importers Americas Inc.  
Gourmet Guru  
Hunts Point Terminal Produce Cooperative Association, Inc.  
JCJ Marketer Corp.  
Jetro/RD  
Lucky's Real Tomatoes  
Old Poland Foods  
Pacific Fruit  
Quaker Sugar Company  
Southeast Produce  
Super Produce  
SYSCO Food Services of Metro New York  
Teri Nichols Institutional Food Merchants

### AGENCIES

Below is a listing of the nearly 600 community food programs that City Harvest serves throughout the five boroughs of New York City. Together we help feed over 300,000 New Yorkers each week.

2044 Benedict Ave. Emergency Food Program  
Abraham Residence (Met Council Project)  
Abrigo Del Altistimo  
Abundant Life Tabernacle  
ACT Community Development Corps  
Advent Community Day Care Center  
African Redemption Alliance, Inc.  
African Women's Dream, Inc.  
Agape Social Services-Beulah Church  
Aguila Foundation - Cauldwell Family Residence  
Aishel Shabbat  
All People's Church of The Apostolic Faith  
All Souls Church  
Allen Outreach Ministry Church  
American Sevashram Sangha, Inc.  
Ammi Evangelical Baptist Church  
Anchor House  
Anchor House Women's Facility  
Anna Lefkowitz Day Care Center  
Arc XVI Ft. Washington Senior Center  
Barrier Free Living  
BASICS, Inc.  
Bay Ridge Center for Older Adults

Beacon of Hope House  
Beacon of Hope House - Residence  
Bedford Stuyvesant Early Childhood Development Center  
Bellevue Hospital - Alcohol Outpatient  
Berean Seventh Day Adventist Church  
Beth Gavriel Shaare Zion  
Bethany Baptist Church of Jamaica  
Bethany United Methodist Church  
Bethel Gospel Assembly, Inc.  
Bethel Gospel Tabernacle  
Bethel Mission Church  
Bethel Prayer Ministry Inter. USA, Inc.  
Bethel Sunshine Camp  
Bethesda Missionary Baptist Church  
Bethlehem French SDA Church  
Bible Faith Tabernacle  
Black Forum of Co-op City  
Bnai Raphael Cheshed Organization  
Bowery Mission Ministries  
BRC - Fulton House  
BRC - Glass Factory  
BRC - Los Vecinos SRO  
BRC - Scatter Site  
BRC - Supported Housing Program  
BRC Cecil Ivory House  
Bread of Life Mission c/o Mt. Olivet Church  
Broadway Community, Inc.  
Bronx AIDS Services  
Bronx Pentecostal Deliverance  
Bronx SDA Church  
Bronx Temple SDA Church  
Brooklyn Faith SDA Church  
Brooklyn Rescue Mission  
Brooks Memorial United Methodist Church  
Brown Memorial Baptist Church  
Brownsville SDA Church  
Cabrin Immigrant Services  
Calvary Baptist Church  
Calvary Pentecostal Church  
Calvary UFW Baptist Church  
Calvary's Mission Food Pantry  
CAMBA - The Gathering Place  
CAMBA - Beyond Hunger  
Emergency Food Pantry  
Canaan Senior Service Center  
Caribbean American SteelPan Ed. Center  
Caring Community Hope  
Casa La Esperanza  
Cathedral Kitchen - St. John the Divine  
Cathedral of Joy Church of God, Inc.  
Catholic Charities Northside Sr. Center  
CCNS/St. Joseph Head Start  
Cecil Hotel  
Center for Elimination of Violence  
Center of Hope, Bread of Life  
Central Harlem Alcohol Crisis Center  
Centro Evangelistico M.M.M., Inc.  
Child Development Support Corporation

Children's Aid Society - Bronx Center  
Children's Aid Society - Douglass Center  
Children's Aid Society - East Harlem  
Children's Aid Society - PS 5 Head Start  
Children's Aid Society - PS 8 Head Start  
Christ Apostolic Church of God  
Christ the King  
Christian Crossroads, Inc.  
Christian Cultural Center  
Christian Fellowship SDA Church  
Christian Pentacostal Church  
Christina Home Care Services, Inc.  
Church of God  
Church of God (NY)  
Church of God Feeding The Hungry  
Church of God in Christ Jesus  
Church of God in Christ on the Hill  
Church of God of Salvation  
Church of God, Inc.  
Church of The Epiphany  
Church of Village/ UMC  
City of Light Christian Center  
Cluster House - Urban Pathways  
Coalition for the Homeless  
Columba Hall  
Community Action for Human Service  
Community Center of Immigrants  
Community Food Pantry of Highbridge  
Community Food Resource Center  
Community Health Action of Staten Island  
Community League of West 159th Street  
Community Lounge for Senior Citizens  
Community Lounge Senior Ctr/ Friendly Soup Kitchen  
Community Parents Head Start  
Congregation B'nai Jeshurun  
Congregation of the House of Israel  
Congregation Meor Hachaim Of Luna Park  
Congregation Shaare Zedek  
Cornerstone SDA Church  
Corpus Christi Food Pantry  
Cothoa Luncheon Club  
Council of Jewish Organization of S.I.  
Create, Inc.  
Create, Inc. - Create Young Adult  
Create, Inc. (Outpatient)  
Creston Avenue Baptist Church  
Crossroads Community Services  
Crossroads SDA Church  
Crown Heights Jewish Community Council  
Cuyler Warren United Methodist Church  
Damon House New York, Inc.  
Davidson Community Center  
Dawning Village - Head Start  
Day Spring Church  
Deliverance Temple Church  
Doe Fund A Better Place

Dorot-Homeless Prevention Program  
Eastchester Gardens Resident Council  
Ebenezer Haitian Baptist Church  
Ebenezer SDA Church  
Ebenezer Seventh Day Adventist Church  
Echo Apartments  
Educational Alliance, Inc.  
Ega Hall  
Ehrlich Residence  
El Divino Salvador  
Elmcour Youth and Adult Activities  
ELOHIM - Community Development Cooperation  
Emmanuel Church  
Emmaus House, Inc.  
Emmaus S.D.A. Church  
Euclid 500 Block Association  
Euclid Hall - Westside Federation For Seniors  
Evangelist Outreach  
FACES NY, Inc.  
Faith Assemblies of God  
Faith Based Food Distribution & Dev. Corp.  
Faith Tabernacle Baptist Church  
Family Renaissance Inc.  
Family Services Network  
First Baptist Church  
First Church of God in Christ  
First Corinthian Food Pantry  
First Presbyterian Church - Springfield Gardens  
First Reformed Church of Jamaica  
Fraternite Notre Dame, Inc.  
Full Gospel Assembly Church  
Full Gospel Tabernacle of Faith Church  
Garden of Prayer  
Gay Men's Health Crisis - Child Life  
Gema Hall  
Genesis Supportive Housing  
George Daly House  
Gethsemane Baptist Church of Deliverance  
Give Them To Eat  
Glenridge Senior Citizen  
Multi-Service Center  
Goddard Riverside - The Other Place  
Goddard Riverside - The Senate  
Godian Fellowship  
Good Counsel Homes, Inc.  
Good Counsel, Inc.  
Good News Deliverance Tabernacle  
Goodwill Tenants Association  
Gospel Assembly - Queens - Assemble Evangelique  
Grace Episcopal Church West Farms  
Grace Hispanic United Methodist Church  
Grand Central Neighborhood  
Grand Coalition of Seniors-Grand Street Settlemet  
Grand Concourse SDA Church  
Greater Faith Community Baptist Church  
Greater Unified Freewill Baptist Church  
Hamilton Grange Senior Citizen Center

Hanac Ravenswood  
 Hannah Kosher Food Shabbat Foundation  
 Hanson Place SDA Community Service  
 Hazel Brooks Senior Center  
 Hebron SDA French Church  
 Help Supportive Employment Center  
 Helping Hands Christian Community Center  
 Highbridge Nurse School  
 Hollis Avenue Congregational Church  
 Hollis St. Albans Church of the First Born  
 Holy Apostles Soup Kitchen  
 Holy Cross Roman Catholic Church  
 Holy House Of Prayer  
 Holy Innocent Church, Inc.  
 Holy Tabernacle Church, Inc.  
 Holy Temple Church  
 Hope Christian Center  
 Hope City Empowerment Ctr. - Beulah Church Nazarene  
 Horeb SDA Church - Food Pantry  
 Hour Children - Our Outreach Food Pantry  
 House of Prayer  
 Housing Works  
 HS IS 49  
 HS PS 385  
 HS PS 59  
 Iglesia Alianza Cristiana Misionera Ebenezer  
 Iglesia Pentecostal el Maestro  
 Immaculate Conception  
 International Pentecostal City Mission  
 Iris House  
 Jackie Robinson Senior Center  
 Jan Hus Presbyterian Church  
 J-CAP Queens Village Committee  
 Jericho House  
 Jericho Project  
 Jewish Community Council of Canarsie  
 Jewish Institute of Queens Emergency Food Program  
 Jewish Service Coalition  
 John Wesley United Methodist Church  
 Kehillat Sephardim Synagogue  
 Kenmore Associates LP  
 Ladies Bikur Cholim Dsatmor  
 Las Maravillas Del Exodo  
 Lenox Hill Senior Center  
 Leviticus Church - 5 Loaves and 2 Fishes  
 Liberation & Healing Food Pantry  
 Libres Por Jesucristo  
 Little Sisters of the Assumption  
 Love Gospel Assembly  
 Loving Care Center - God's Battalion  
 Lower East Side Harm Reduction Center  
 Macedonia AME Church Community Devel. Corp.  
 Macedonia Church of Christ  
 Machon Chana Women's Inst.  
 Madison Residence for Except. Persons

Maranatha Baptist Church  
 Masbia  
 McDonough Street Head Start  
 Metro Baptist Church  
 Metropolitan Baptist Church  
 Metropolitan Community Church  
 Metropolitan Council (Food Pantry)  
 Mid Bronx CCRP Early Childhood Center  
 Mid-Bronx Senior Citizen Council  
 Miller Avenue Block Association  
 Mizpah Assemblies, Inc.  
 More Grace Redemptive Center, Inc.  
 Morris Brown Helping Hands SK  
 Morrisania Revitalization Corporation  
 Mount Calvary Baptist Church  
 Mount Horeb Baptist Church  
 Mount Olive House  
 Mount Olivet Baptist Church  
 Mount Paran Baptist Church  
 Mount Sinai Spiritual Church of God  
 Mount Zion A.M.E Church  
 Movement of Pentecostal  
 Mt. Hope Pilgrim Spiritual Baptist  
 Mt. Moriah Church of God In Christ  
 National Sorority of Phi Delta Kappa  
 Natl Comm-Furtherance Jewish Education  
 Neighbors Together  
 New Brighton Community LDC  
 New Covenant Temple  
 New Direction Services, Inc.  
 New Haven SDA Temple  
 New Hope Family Worship Center  
 New Jerusalem Baptist Church  
 New Life - Head Start  
 New Life Community Development Corporation  
 New Life SDA Church  
 New Life Tabernacle Inc. - Family Life Center  
 New St. John Baptist Church  
 New World Creation Resource Center  
 New York City Rescue Mission  
 Newman Memorial United Methodist Church  
 Northeastern Brooklyn Department of S.S.  
 NY School of Urban Ministry  
 Odyssey House Haven H.D.F.C  
 Oneg Shabbos  
 Open Door Outreach Ministry  
 OTSAR  
 Our Lady of Good Counsel Church  
 Our Lady of Lourdes Church  
 Our Lady of Mercy Church  
 Our Lady of Refuge R.C. Church  
 Outreach House - Queens County Youth Development  
 Overcoming-Love Ministries  
 Overcoming-Love Ministries - Soup Kitchen  
 Overcoming-Love Ministries - Pulaski Family Residence  
 Park Slope Christian Help, Inc  
 Part of the Solution  
 Peter's Place

Phase Piggyback, Inc.  
 Phipps Houses  
 Greene Avenue Development  
 Polo Grounds Valley, Inc.  
 Praxis Housing Initiatives - St. Nicholas Hotel  
 Praxis Housing Initiatives - Barbour Hotel  
 Praxis Housing Initiatives - Riverside Place  
 Presbyterian Senior Center  
 Price Memorial Baptist Church  
 Pride Site 2  
 Project Greenhope: Services For Women  
 Project Hospitality  
 Project L.E.A.D - Kosher Kitchen  
 Project ORE of Ed. Alliance  
 Project Renewal - Manhattan Bowery  
 Project Street Beat  
 Project Street Beat of Brooklyn  
 Prospect SDA Church  
 PSCH - Professional Services Care for the Handicaped  
 Puerto Rican Family Inst.  
 Queens Church of The First Born  
 Queens Jewish Community Council  
 Queens Tabernacle Church, Inc. Food Pantry  
 Queensboro Temple SDA Church  
 Quincy Community Services  
 Reaching Out Community Services  
 Ready Willing & Able The Doe Fund, Inc.  
 Ready Willing and Able - Harlem #1  
 Recovery Works  
 Redemption Community World Ministry  
 Rescue Ministries Brooklyn  
 Richmond Senior Services, Inc.  
 Risen Christ Lutheran Church  
 River Fund, Inc.  
 River Watch, Inc.  
 Rush Temple A.M.E. Zion Church  
 SA - Brownsville  
 SA - Bushwick Corps  
 SA - Centennial House  
 SA - Citadel  
 SA - Harlem Temple  
 SA - Manhattan Citadel Corp  
 SA - Queens Astoria Corps  
 SA - Stapleton Citadel  
 SA - Sunset Park Corps  
 Sacred Heart of Jesus Church  
 Salt & Sea Mission  
 Salvation Army  
 Bronx Tremont Corps.  
 Salvation Army  
 New York Temple Corps  
 Sanctified Church of God  
 Sanctuary For Families  
 SCAN-NY Head Start  
 SCAN-NY Volunteer Parent Aides Assoc.  
 Sephardic Bikur Holim  
 Shelter and Food For the Homeless  
 Shilo Church of Christ  
 Shiloh SDA Church

Shorefront Jewish Community Council  
 Solid Rock SDA Church  
 South Road Tabernacle  
 Southeast Bronx Neighborhood Centers, Inc. - Blondell Joyner Day  
 Southeast Bronx Neighborhood Centers, Inc. - Five Start Day Care  
 Southeast Bronx Neighborhood Centers, Inc. - Gwendolyn B. Bland  
 Southeast Bronx Neighborhood Centers, Inc. - McKinley Community  
 Southeast Bronx Neighborhood Centers, Inc. - Minds Unlimited  
 Southern Baptist Church  
 Springfield Gardens SDA Church  
 St. Albans Baptist Church  
 St. Albans Gospel Assembly, Inc.  
 St. Ann's Corner of Harm Reduction  
 St. Ann's Pantry & Soup Kitchen  
 St. Augustine American Catholic Church, Inc.  
 St. Benedict the Moor Comm. Center  
 St. Cecilia's Parish Services  
 St. Christopher Otilie  
 St. Clements Food Pantry  
 St. Edmunds Youth Program Inc  
 St. Edwards Food Pantry  
 St. James Church  
 St. Jerome's Community Food Pantry  
 St. Johns Baptist Church  
 St. John's Bread and Life Program  
 St. Lukes Baptist Church  
 St. Lukes Lutheran Church  
 St. Mark's Church of Christ  
 St. Mark's The Evangelist  
 St. Mary's Episcopal Church  
 St. Matthew's - St. Timothy's Day Care  
 St. Matthew's RC Church  
 St. Nicholas Senior Center  
 St. Paul's House, Inc.  
 St. Phillip's Christian Church  
 St. Phillip's Episcopal Church  
 St. Stephen Outreach  
 St. Thomas Episcopal Church  
 Stanley Isaacs Community Center  
 Stapleton UAME Church  
 Staten Island Liberian Community  
 Staten Island SDA Church  
 Steinway Child and Family Services, Inc.  
 Stuyvesant Heights Christian Center  
 Teen Challenge  
 The Bridge, Inc.  
 The Carter Burden Lunch Senior Club  
 The Center for Family Life  
 The Church of God Seventh Day Pentecostal, Inc.  
 The Door  
 The Father's Heart Ministries  
 The Great I Am  
 The Holy Trinity Neighborhood Center  
 The Hope Line Resource Center  
 The Hope Program  
 The Jericho Residence I & II  
 The Momentum Project, Inc.

The Salvation Army - Jamaica  
 Thurston Memorial Outreach Ministries  
 Tomche Shabbos - Borough Park/Flatbush  
 Trinity Evangelical Lutehran Church  
 Trinity Human Services Corp  
 True Baptist - True Gospel Tabernacle  
 True Holy Church  
 Turning Point Housing  
 Union Baptist Church Community  
 United Bronx Parents, Inc.  
 United Christian Prison Ministry, Inc.  
 United Methodist Center  
 United Presbyterian Church of Ridgewood  
 Unity Faith Outreach  
 Universal Church of Salvation  
 University Community Social Services  
 University Family Residence  
 Upper Manhattan Mental Health Ctr-Council Ent.  
 Upper Room Gospel Baptist Church  
 Urban Pathways - Travelers' Safe Haven  
 Urban Pathways Olivieri - Women  
 Urban Strategies Maternity Res.  
 Urban Strategies TASA Program  
 Urban Strategies, Inc.  
 Va'ad Hakol Crown Heights  
 Village Temple Soup Kitchen  
 Vineyard International Christian Ministries  
 Volunteers of America  
 Walk In Love Family Life Christian Center  
 Washington Heights Community Services, Inc.  
 Washington Heights Ecumenical FP  
 Way Out Church Ministries, Inc.  
 Wayside Baptist Church Sr. Citizens  
 West Side Campaign Against Hunger  
 Willis Avenue United Methodist Church  
 Word of Life Christian Fellowship International  
 Worldwide Evangelical Outreach  
 Xavier Mission  
 Yeled V'Yalda ECC - Silver Lake Head Start #1  
 Yeled V'Yalda ECC - Silver Lake - Head Start # 2  
 Yeshiva Ohel Moshe  
 Yeshiva Torah Vodaath, Inc.  
 YM-YWHA Washington Heights-Inwood  
 Yorkville Common Food Pantry  
 Young Israel of Flatbush Welfare Org.  
 Youth Action Programs & Homes, Inc.  
 Zichron Acheinu Levy-Menachemtzion  
 Zion Church of the Truth Community Service  
 Zion Shiloh Baptist Church

**VOLUNTEERS**

The following individuals and organizations have generously donated their time and talent to the fight against hunger in New York City. These are just a few of the 2,200 volunteers that supported City Harvest last year.

**INDIVIDUALS**

Jerome Adler  
 Spencer Adler  
 Keiko Akashi  
 Joe Allegro  
 Drew Avery  
 Renee Bauman  
 Jodi-Ann Blair  
 Ana Blanco  
 Michael Bolds, Jr.  
 Karen Bowe  
 Ramona Carvajah  
 Ofelia Castiblanco  
 Emily D'Agostino  
 Rashid Dahod  
 Diane Darrow  
 Roselle Dassa  
 Alfred Fields  
 Danielle Frank  
 Claire Gaffney  
 Jim Gayneau  
 Andrew Gelardi  
 Patsy George  
 Tatiana Gleason  
 Sara Gore  
 Lisa Grier  
 Sheryl Hausman  
 Elisabeth Haveles  
 Clay Herrick  
 Chloe Jacobs  
 Sarah Johnson  
 Maxine Kaplan  
 Nikki Kaufmann  
 Micheleen Karnacewicz  
 Tammy Keller  
 Karen Kenny  
 Sarah Knowles  
 Amanda Kost  
 Ellie Krieger  
 Georgia Madiba  
 Troy-Nicholas Malaxos  
 Michael McCaffrey  
 Debra McEvilly  
 Randeep Melhi  
 Hallie Meyer  
 Mary Miller  
 Susan Ashley Moore  
 Karen Nielsen  
 Bhey Owin  
 Marge Perry  
 Carley Petrone  
 Bassam Richards

Raquel Rivera-Pablo  
 Andrew Rogers  
 Sara Rosen  
 Joanne Sasso-Gayneau  
 Amy Schnitzer  
 David Schoen  
 Michael Seto  
 Don Siemer  
 Eric Smith  
 Mattie Smith  
 Estee Smoler  
 Daniel Stern  
 Marie Luisa Stern  
 Tathiana Sundheim-Diaz  
 Barbara Tagliaferro  
 Hallie Tamez  
 Linda Voorsanger  
 Alison Wehr  
 Bob White  
 Eric Williams  
 Rebecca Winzenreid  
 Patricia Wittenstein  
 Carla Young  
 Jacky Yu

**ORGANIZATIONS**

24/7 Media  
 The Altrum Group  
 American Express Foundation  
 Ameriprise Financial  
 Avero, Inc.  
 The Bank of New York Mellon  
 Barclays Capital  
 BlackRock  
 The Blackstone Group  
 Blue Smoke  
 The Cate School  
 Century Road Club Association  
 Cisco Systems  
 Citibank  
 Cohn & Wolfe  
 Credit Suisse  
 Dannon Co. Inc.  
 Deloitte  
 Deutsche Bank  
 DLA Piper US, LLP  
 Ernst & Young, LLP  
 ESPN, Inc.  
 Experian CheetahMail  
 Facebook  
 FactSet Research Systems Inc.  
 Federal Reserve Bank of New York  
 Food Network  
 GIC Asset Management Pte Ltd  
 The Hartford  
 KPMG LLP  
 LXTV  
 MacKay Shields  
 Macquarie Group  
 The McGraw-Hill Companies  
 Meebo  
 Merrill Lynch Women's Exchange  
 MetLife  
 Mindspring  
 Mitsui & Co. (U.S.A.), Inc.  
 Momofuko

Morgan Stanley  
 NBC 4 New York  
 NetApp  
 New York Cares  
 New York Mets  
 NJ Jack & Jill  
 NYSE Euronext  
 Phillips Exeter Academy Alumni  
 Santa Fe Tobacco Company, Inc.  
 UBS  
 UMT Consulting  
 UnitedHealthcare  
 Verizon  
 Viacom, Inc.  
 Victor's Café  
 Weight Watchers  
 Whole Foods Market  
 Union Square Partnership  
 Univision Communications, Inc.

**SKIP LUNCH FIGHT HUNGER**

The support of the following teams, and hundreds more, raised nearly \$500,000 in a single day to help feed hungry children and their families through City Harvest's annual Skip Lunch Fight Hunger campaign.

American Express Publishing  
 BlackRock  
 The Blackstone Group  
 BORO Magazine  
 Citibank  
 Debevoise & Plimpton LLP  
 Deloitte  
 Deutsche Bank  
 Digitas  
 Ernst & Young, LLP  
 Financial Dynamics  
 KPMG LLP  
 Macmillan  
 Macquarie Group Foundation  
 Morgan Stanley Smith Barney  
 Nielsen  
 NYC Department of Finance  
 Polo Ralph Lauren  
 Prudential Douglas Elliman  
 Random House, Inc.  
 Saint David's School  
 State Street Corporation  
 UniCredit  
 Workman Publishing  
 Yodle

## CITY HARVEST FOOD COUNCIL

The City Harvest Food Council brings together top chefs, restaurateurs and others to help fight hunger. Our Food Council donates some of the city's best food, raises funds to support our work and helps heighten our visibility.

### CHAIR

Eric Ripert  
*Le Bernardin*

### HONORARY CHAIRS

Arthur F. Backal  
*Backal Hospitality Group & State of the Art Enterprises*

Dana Cowin  
*Food & Wine Magazine*

Michael Lomonaco  
*Porter House New York*

Danny Meyer  
*Union Square Hospitality Group*

Drew and Tracy Nieporent  
*Myriad Restaurant Group*

Cristyne L. Nicholas  
*Nicholas & Lance Communications LLC*

### FOOD COUNCIL MEMBERS

Michael Anthony  
*Gramercy Tavern*

Donatella Arpaia  
*Donatella, Kefi*

Phillip Baltz  
*Baltz & Company*

Dan Barber  
*Blue Hill, Blue Hill at Stone Barns*

Jennifer Baum  
*Bullfrog & Baum*

Florian Bellanger  
*MAD MAC*

Ron Ben-Israel  
*Ron Ben-Israel Cakes*

David Bouley  
*Bouley*

Daniel Boulud  
*Daniel*

Terrance Brennan  
*The Artisanal Group*

Ed Brown  
*Ed's Chowder House*

David Burke  
*David Burke Townhouse, Fishtail, David Burke Kitchen*

Joey Campanaro  
*the little owl, Market Table, Kenmare*

Scott Campbell  
*New Leaf Café*

Andrew Carmellini  
*Locanda Verde, The Dutch*

David Chang  
*Momofuku*

Tom Colicchio  
*Craft Restaurants*

Jorge Collazo  
*Office of SchoolFood, The NYC Department of Education*

Scott Conant  
*Scarpetta*

Ariane Daguin  
*D'Artagnan*

John Doherty

Geoffrey Drummond

Alain Ducasse  
*Adour Alain Ducasse at The St. Regis, Benoit Restaurant and Bar*

Gillian Duffy  
*New York Magazine*

Todd English  
*Olives*

Scott Feldman  
*Two Twelve Management & Marketing*

Myra Fiori  
*illy caffè North America*

Bobby Flay  
*Bar Americain, Mesa Grill*

Tyler Florence  
*Foodwork Productions*

Tony Fortuna  
*T Bar Steak & Lounge*

Penny & Peter Glazier  
*The Glazier Group*

Alex Guarnaschelli  
*Butter, The Darby*

Joseph R. Gurrera  
*Citarella*

Stephen P. Hanson  
*B.R. Guest Restaurants*

Kerry Heffernan  
*South Gate Restaurant*

Rita Jammet  
*Bouquet Adventures*

Steven M. Kamali  
*Steven Kamali Hospitality*

Karen Karp  
*Karp Resources*

Jim Lahey  
*Sullivan Street Bakery*

Adam Perry Lang  
*Daisy Mae's BBQ USA*

Anita Lo  
*Amisa*

Marco Maccioni  
*Osteria Del Circo*

Nick Mautone  
*Mautone Enterprises*

Tony May  
*SD26*

Henry Meer  
*City Hall*

Julian Medina  
*Coppelia, Toloache, Yerba Buena*

Philip Meldrum  
*FoodMatch*

Pamela & Marc Murphy  
*Benchmark Restaurants*

Liz Neumark  
*Great Performances*

Simon Oren  
*Culinary Tour de France Restaurant Group*

Becca Parrish  
*Becca PR*

François Payard  
*François Payard Bakery, FC Chocolate Bar*

Zakary Pelaccio  
*The Fatty Crew*

Ben Pollinger  
*Oceana*

Rachael Ray

Donna Rodriguez  
*B.R. Guest Restaurants*

Philip Ruskin  
*Ruskin International*

Marcus Samuelsson  
*Red Rooster*

Chris Santos  
*Beauty & Essex, The Stanton Social*

Benjamin Schmerler  
*First Press Public Relations*

Gail Simmons  
*Food & Wine Magazine*

Rick Smilow  
*Institute of Culinary Education*

John Stage  
*Dinosaur Bar-B-Que*

Dr. Felicia D. Stoler,  
DCN, MS, RD, FACSM

Bill Telepan  
*Telepan*

Laurent Tourondel  
*BLT Market*

Maire Ullrich  
*Cornell Cooperative Extension*

Tom Valenti  
*Ouest*

Jean-Georges Vongerichten  
*Jean Georges Management*

Michael White  
*Altamarea Group*

Katie Workman  
*Cookstr.com*

Melanie Young  
*The Connected Table*

Geoffrey Zakarian  
*The Lamb's Club, The National*

Natalia Zaldivar-Bonzon  
*Victor's Café*

Terry Zarikian  
*China Grill Management*

## BOARD OF DIRECTORS

### CHAIRMAN

James D. Kallman

### VICE CHAIRMAN

Heather Mnuchin

### TREASURER

Zvi Eiref

### SECRETARY

Joy Ingham

### BOARD MEMBERS

Marjorie Sybul Adams

Carol Atkinson

Arthur F. Backal

Alex Berenson

Richard S. Berry

Randy Brown

Matthew C. Bryant

Daniel J. Bumgardner

Dana B. Cowin

Misook Doolittle

Gary Freilich

Tom Guba

Stacy Hock

Anita Hoffman

Sharon H. Jacquet

Herb Karlitz

Alan Katz

Pamela Kaufmann

David Kirchhoff

Jason Kliot

Bill Koenigsberg

Grace Koo

Kerrie D. MacPherson

Nicholas V. Mautone, Jr.

Elizabeth W. Y. Moore

Marc Murphy

Barbara G. Novick

Victor Ozeri

Carol Pledger

Rachael Ray

Eric Ripert

Richard J. Smilow

Clifton Strain

Emily Susskind

Zubin Taraporevala

Topsy Taylor

Jeffrey L. Weiss

Katie Raskin Workman

Michael A. Young

Natalia Zaldivar-Bonzon

### IMMEDIATE PAST CHAIRMAN

Susan Marks

### FOUNDING CHAIR

Harley Brooke-Hitching

### CHAIRMAN EMERITUS

Robert Cahill, Jr.

Peter Schmidt